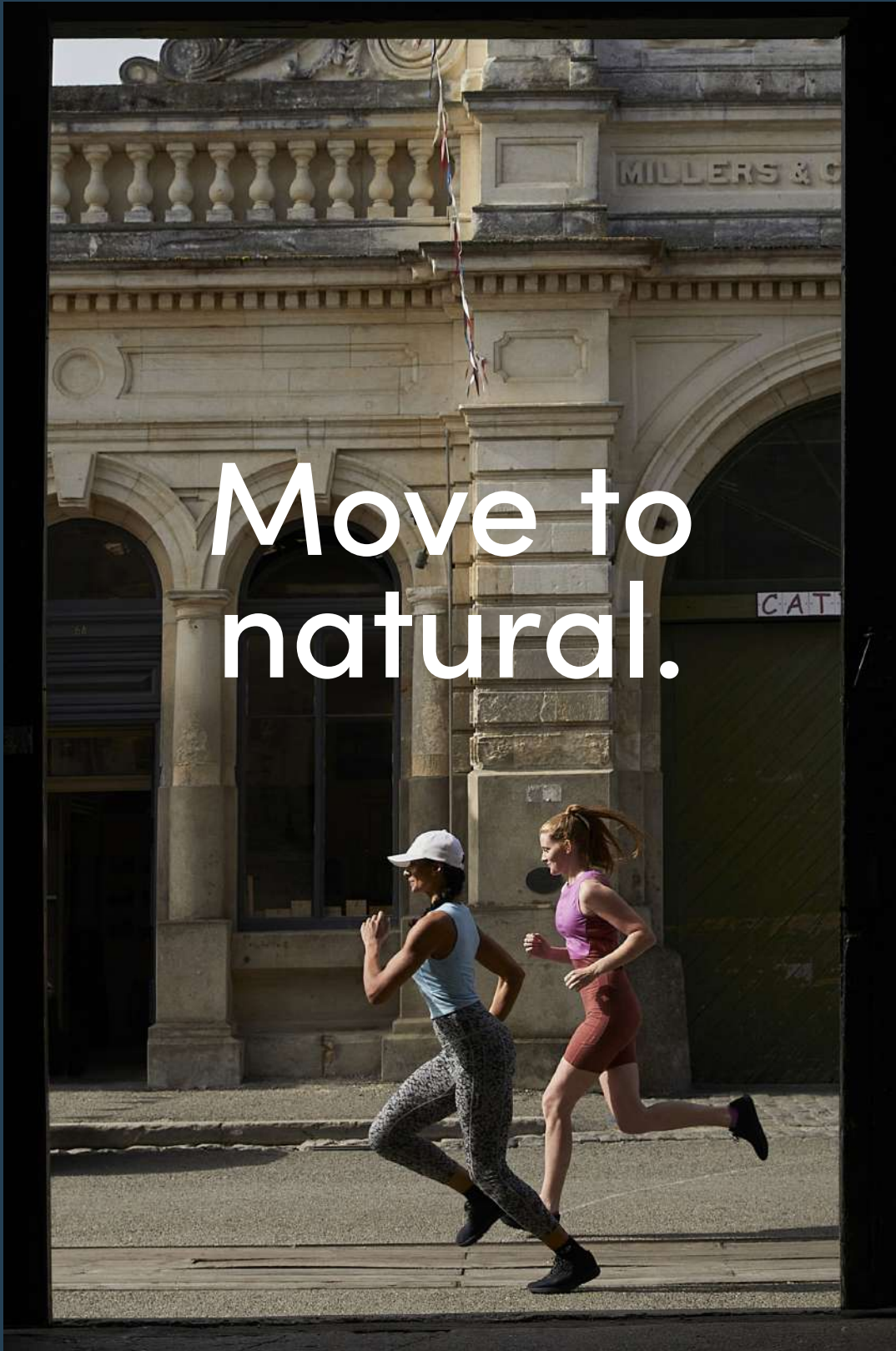


EMEA SS22



Move to  
natural.

icebreaker  
Move to natural



# Naturally better.

There's no denying the last year has challenged and changed us. We've been forced to reset, simplify and choose what's truly important. To all our partners and community, thank you for being with us through thick and thin.

What hasn't changed is our belief that nature has the answers. We continue to look to nature to bring you clothing that is naturally innovative and progressive. This season, we build on our ZoneKnit™ franchise, providing a range of breathable and odour-resistant performance styles that we believe rival any synthetic alternative.

Experience is everything and our season is designed for all life's moments. So slip away, go off grid, run with nature in motion, ski that natural slope, or simply lounge in natural luxury.

Move to natural™



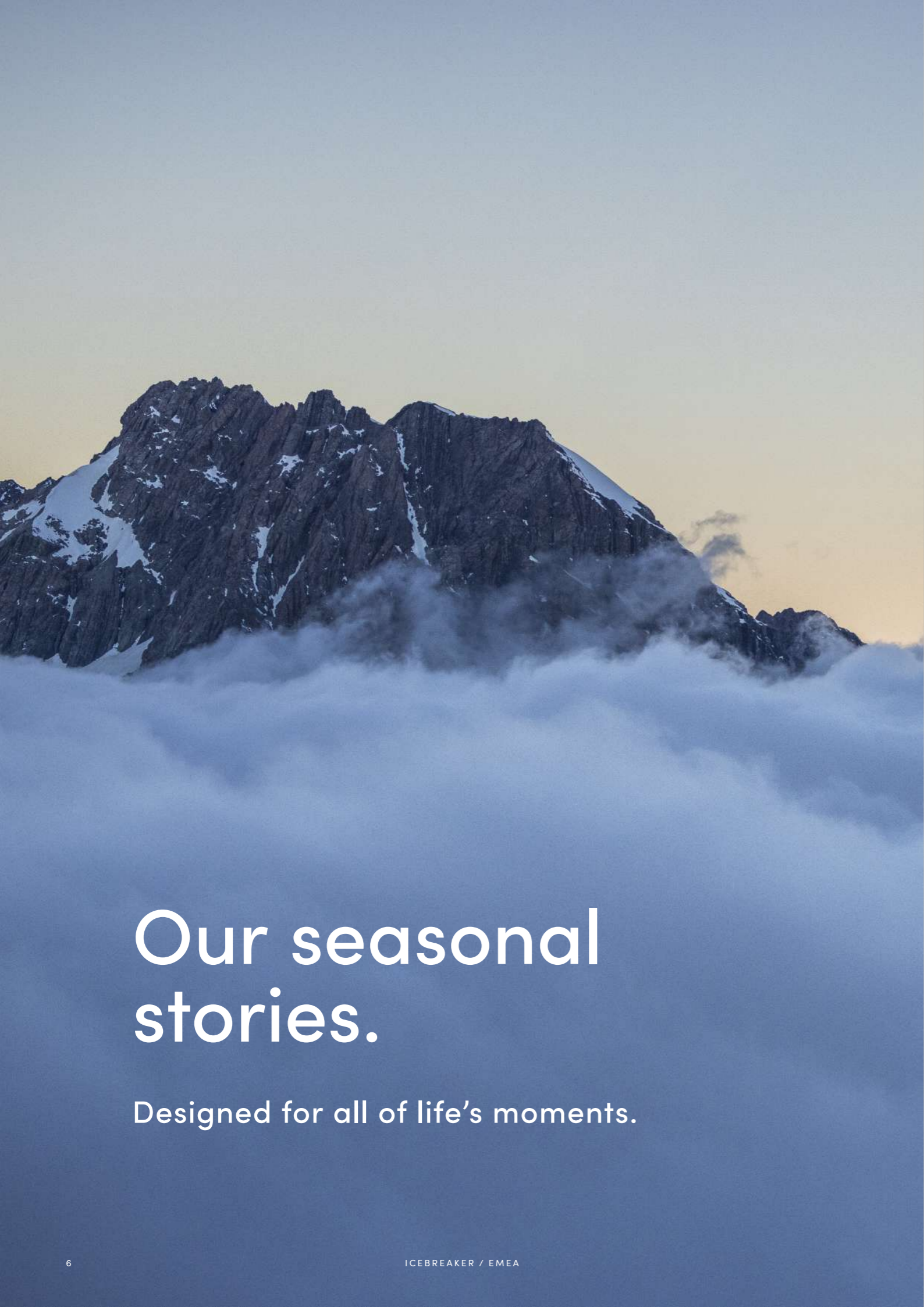
icebreaker

## Our aim: plastic free.

Did you know that synthetic clothing is based on plastic fibres sourced from petrochemicals? We believe it's better to focus on natural solutions. So we've set ourselves an ambition to have all our main fabrics plastic-free by '23, so that you can make conscious choices in your wardrobe.

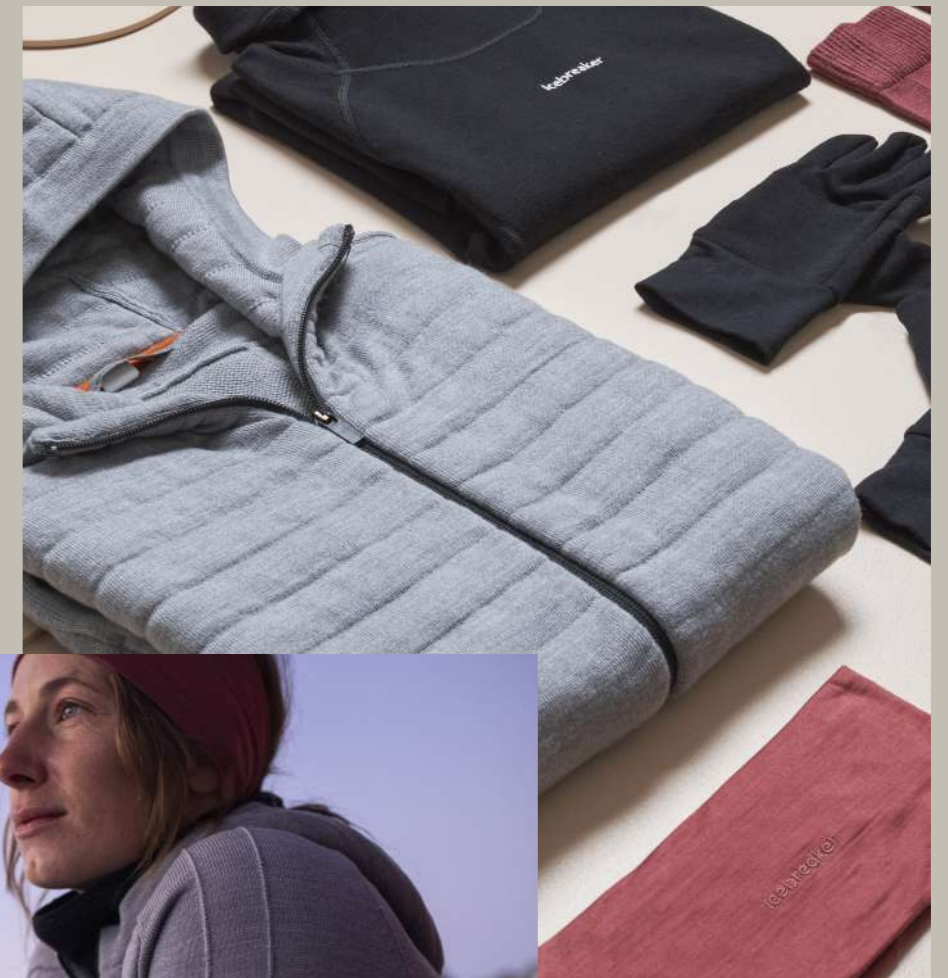
We're focusing on removing plastic in our main fabrics (and packaging while we're at it) and replacing them with natural alternatives where possible. In 2020, we had a total of 87% merino and plant-based fibres across our range, with the remaining 13% being synthetic materials. In 2021, this number increases to 91%, leaving 9% of synthetic materials to go.

We still have much to do but we are committed to nature and committed to doing better.



# Our seasonal stories.

Designed for all of life's moments.



# Natural slope.

On or off piste, head into the alpine, naturally. Stay warm in icebreaker layers that move with your body to keep you comfortable for longer.



# Nature in motion.

On the trail, or on the pavement, run and recover, naturally. Enjoy your most intense activities and move freely with our newest natural innovation, ZoneKnit™.



# Off grid.

Head off grid to reset and restore, naturally. Keep comfortable for longer in icebreaker layers that naturally regulate your body temperature.



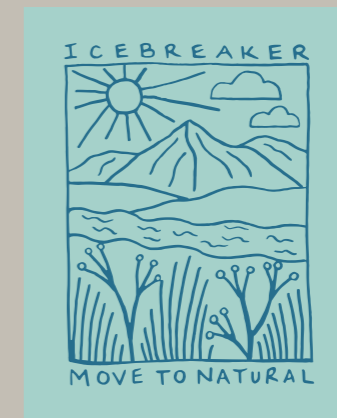
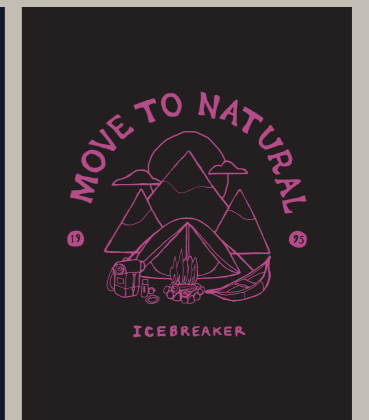
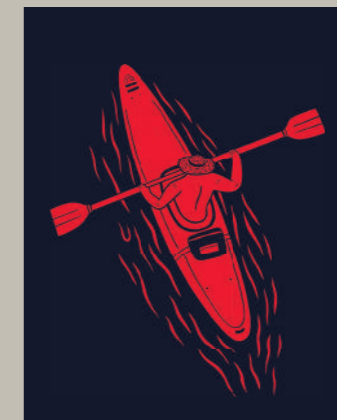
# Natural lounge.

Sit back and relax, wrapped in our most comfortable and breathable merino staples.



# Express yourself.

Express your mood, your style, your values with our 100% merino graphic tees. Every tee has a story.



How we build our collections

# Versatility & simplicity.



## Natural Performance

Designed for long days out on the mountain and those shorter adventures on your doorstep. Made from natural fibers, with performance functionality and versatility in mind.

## Natural Living

From lazy Sunday coastal walks to city hopping weekend breaks, an assortment for the casual and astute urban lifestyles of those living and working in the city or at home.

## Natural Essentials

Essentials are just that, the staples of the icebreaker wardrobe. The most versatile, reliable, hardworking natural styles that merge effortlessly with our extended collections.

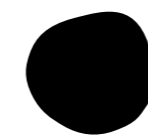
# Colour philosophy.

Our colours are chosen based on a number of considerations.

First and foremost, we're inspired by natural hues. How those hues of a colour work together, how they change across a landscape or object. We try to avoid artificial or synthetic looking colours. We avoid 'perfect' primary colours as they lose the imperfection and uniqueness that we find in nature.

Secondly we're interested in contrast. A bright colour doesn't stand out in a room full of bright colours. Against a room of more subdued tones it comes alive. The interaction of the colours to each other is what creates the expression. There needs to be a calm, quiet background for the things in the foreground to really pop. We work with a background of mostly toned down, neutral and midtone colours, with a few select punchy highlights to bring the room alive.

Thirdly, the context of how the colour will be worn. Our products are worn in open wilderness and high mountains, as well as offices and on the street. We want colours that are sophisticated and work across these contexts. We sometimes need colours that make you stand out for safety on a mountain, but even these shades should be unique and individual.



Black



Loden



Haze



Jet Hthr



Midnight Navy



Praline



Azul



Gritstone Hthr



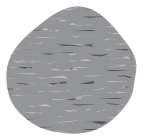
Royal Navy



Cosmic



Lava



Metro Hthr



Monsoon



Grape



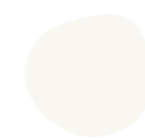
Deep Midnight



Blizzard Hthr



Spice



Snow



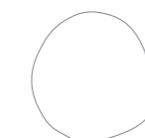
Electric



Ecrú Hthr



Sand



Enamel



# The layering system.

icebreaker pioneered the world's first natural layering system – designed to give you the freedom to enjoy and be inspired by your adventures in nature, whatever the conditions or season.



## Skin

Silky-soft and luxurious, our breathable skin layers wick moisture away from the body and regulate temperature.



## First

Natural softness against your skin, for breathable comfort and climate control. Versatility, style, function and performance without compromise.



## Mid

Wrapping the body in comfort, our insulating mid layers add a buffer zone for moisture and a shield from the cold.

# The layering system.

icebreaker pioneered the world's first natural layering system – designed to give you the freedom to enjoy and be inspired by your adventures in nature, whatever the conditions or season.



## Skin

Silky-soft and luxurious, our breathable skin layers wick moisture away from the body and regulate temperature.



## First

Natural softness against your skin, for breathable comfort and climate control. Versatility, style, function and performance without compromise.



## Mid

Wrapping the body in comfort, our insulating mid layers add a buffer zone for moisture and a shield from the cold.

# Our natural technologies.

## ZoneKnit™

Naturally Breathable

Engineered body mapped technology to regulate your body temperature and let your skin breathe during high intensity activity.

## RealFleece™

Naturally Warm

An authentic brushed merino wool that is naturally warm and soft to the touch.

## Cool-Lite™

Naturally Cool

A lightweight and breathable fabric blend that is designed to wick moisture away from your body.

## MerinoLoft™

Naturally Insulated

A cruelty-free alternative to down insulation, made from 100% merino fibres with high warmth-to-weight ratio, that still stays warm when wet and is machine-washable.



# Base Layer.

Sitting softly next to your skin, natural base layers move and breathe in harmony with your body for comfort all day long.



### 150 Zone SS Crewe



Lightweight highly breathable base layer that's perfect for adventure and everyday training, with strategically zoned panels of merino mesh for active ventilation.

- BodyfitZone™ - features breathable zones for high intensity activity
- Raglan sleeve construction for mobility
- Gusseted underarms for mobility and comfort
- Flatlock seams to prevent friction
- Drop tail hem for added coverage

**Fabric Main:** 150gm<sup>2</sup> Jersey Corespun, 83% Merino Wool, 12% Nylon, 5% LYCRA®

**Fabric Mesh:** 120gm<sup>2</sup> Eyelet Corespun, 84% Merino Wool, 15% Nylon, 1% LYCRA®

**Fiber micron:** Merino Wool 18.9 micron

**Fit:** Slim

**Sizes:** XS-XL

**Ships:** 31-January-2022



IB104330001  
BLACK



IB104330345  
COSMIC  
NEW

### 150 Zone LS Crewe



Lightweight highly breathable base layer that's perfect for adventure and everyday training, with strategically zoned panels of merino mesh for active ventilation.

- BodyfitZone™ - features breathable zones for high intensity activity
- Thumb loops keep your sleeves in place and hands warm
- Raglan sleeve construction for mobility
- Gusseted underarms for mobility and comfort
- Flatlock seams to prevent friction
- Drop tail hem for added coverage

**Fabric Main:** 150gm<sup>2</sup> Jersey Corespun, 83% Merino Wool, 12% Nylon, 5% LYCRA®

**Fabric Mesh:** 120gm<sup>2</sup> Eyelet Corespun, 84% Merino Wool, 15% Nylon, 1% LYCRA®

**Fiber micron:** Merino Wool 18.9 micron

**Fit:** Slim

**Sizes:** XS-XL

**Ships:** 31-January-2022



IB104331001  
BLACK



IB104331345  
COSMIC  
NEW

### 150 Zone LS Half Zip



Lightweight highly breathable base layer that's perfect for adventure and everyday training, with strategically zoned panels of merino mesh for active ventilation.

- BodyfitZone™ - features breathable zones for high intensity activity
- Thumb loops keep your sleeves in place and hands warm
- Raglan sleeve construction for mobility
- Gusseted underarms for mobility and comfort
- Flatlock seams to prevent friction
- Drop tail hem for added coverage

**Fabric Main:** 150gm<sup>2</sup> Jersey Corespun, 83% Merino Wool, 12% Nylon, 5% LYCRA®

**Fabric Mesh:** 120gm<sup>2</sup> Eyelet Corespun, 84% Merino Wool, 15% Nylon, 1% LYCRA®

**Fiber micron:** Merino Wool 18.9 micron

**Fit:** Slim

**Sizes:** XS-XL

**Ships:** 31-January-2022



IB104332001  
BLACK



IB104332340  
COSMIC/GRAPE  
NEW

### 150 Zone Leggings



Lightweight highly breathable base layer that's perfect for adventure and everyday training, with strategically zoned panels of merino mesh for active ventilation.

- BodyfitZone™ - features breathable zones for high intensity activity
- Gusset for mobility and comfort
- Flatlock seams to prevent friction

**Fabric Main:** 150gm<sup>2</sup> Jersey Corespun, 83% Merino Wool, 12% Nylon, 5% LYCRA®

**Fabric Mesh:** 120gm<sup>2</sup> Eyelet Corespun, 84% Merino Wool, 15% Nylon, 1% LYCRA®

**Fiber micron:** Merino Wool 18.9 micron

**Fit:** Slim

**Sizes:** XS-XL

**Ships:** 31-January-2022



IB104334001  
BLACK



### 200 Oasis LS Crewe



The 200 Oasis base layer range is the benchmark against which all others are judged. The long sleeve crewe is made with icebreaker's most versatile merino jersey fabric for year-round layering performance whatever the activity.

- 100% Merino - Soft merino fibers that regulates body temperature in all weather conditions and resists odors
- Gusseted underarms for mobility and comfort
- Offset shoulder seams to prevent friction
- Flatlock seams to prevent friction
- Drop tail hem for added coverage

**Fabric Main:** 200gm<sup>2</sup> Jersey, 100% Merino Wool

**Fiber micron:** Merino Wool 18.9 micron

**Fit:** Slim

**Sizes:** XS-XL

**Ships:** 31-January-2022



IB104375001  
BLACK



IB104375013  
GRITSTONE HTHR



IB104375423  
MIDNIGHT NAVY



IB104375342  
GRAPE  
NEW



### 200 Oasis LS Half Zip



The 200 Oasis base layer range is the benchmark against which all others are judged. The LS Half Zip is made with icebreaker's most versatile merino jersey fabric for year-round layering performance whatever the activity.

- 100% Merino - Soft merino fibers that regulates body temperature in all weather conditions and resists odors
- Gusseted underarms for mobility and comfort
- Offset shoulder seams to prevent friction
- Flatlock seams to prevent friction
- Drop tail hem for added coverage

**Fabric Main:** 200gm<sup>2</sup> Jersey, 100% Merino Wool

**Fiber micron:** Merino Wool 18.9 micron

**Fit:** Slim

**Sizes:** XS-XL

**Ships:** 31-January-2022



IB104380001  
BLACK



### 200 Oasis Shorts



The 200 Oasis base layer range is the benchmark against which all others are judged. The Oasis shorts are made with icebreaker's most versatile merino jersey fabric for year-round layering performance whatever the activity.

- 100% Merino - Soft merino fibers that regulates body temperature in all weather conditions and resists odors
- Gusset for mobility and comfort
- Flatlock seams to prevent friction

**Fabric Main:** 200gm<sup>2</sup> Jersey, 100% Merino Wool

**Fiber micron:** Merino Wool 18.9 micron

**Fit:** Slim

**Sizes:** XS-XL

**Ships:** 31-January-2022



IB0A59KZ001  
BLACK



### 200 Oasis Leggings



The 200 Oasis base layer range is the benchmark against which all others are judged. The leggings are made with icebreaker's most versatile merino jersey fabric for year-round layering performance whatever the activity.

- 100% Merino - Soft merino fibers that regulates body temperature in all weather conditions and resists odors
- Gusset for mobility and comfort
- Flatlock seams to prevent friction

**Fabric Main:** 200gm<sup>2</sup> Jersey, 100% Merino Wool

**Fiber micron:** Merino Wool 18.9 micron

**Fit:** Slim

**Sizes:** XS-XL

**Ships:** 31-January-2022



IB104383001  
BLACK



### 260 Tech LS Crewe



The 260 Tech LS crewe is an incredibly warm merino base layer designed for the coldest months of the year. It is ideal for skiing, snowshoeing and other winter pursuits, making it the go-to piece for winter layering

- 100% Merino - Soft merino fibers that regulates body temperature in all weather conditions and resists odors
- Gusseted underarms for mobility and comfort
- Offset shoulder seams to prevent friction
- Flatlock seams to prevent friction
- Backward set side seams to prevent friction

**Fabric Main:** 260gm<sup>2</sup> Jersey, 100% Merino Wool

**Fiber micron:** Merino Wool 18.9 micron

**Fit:** Slim

**Sizes:** XS-XL

**Ships:** 31-January-2022



IB104387001  
BLACK



### 260 Tech LS Half Zip



The 260 Tech LS Half Zip is an incredibly warm merino base layer designed for the coldest months of the year. It is ideal for skiing, snowshoeing and other winter pursuits, making it the go-to piece for winter layering.

- 100% Merino - Soft merino fibers that regulates body temperature in all weather conditions and resists odors
- Gusseted underarms for mobility and comfort
- Offset shoulder seams to prevent friction
- Flatlock seams to prevent friction
- Backward set side seams to prevent friction

**Fabric Main:** 260gm<sup>2</sup> Jersey, 100% Merino Wool

**Fiber micron:** Merino Wool 18.9 micron

**Fit:** Slim

**Sizes:** XS-XL

**Ships:** 31-January-2022



IB104390001  
BLACK HTHR



### 260 Tech Leggings



The 260 Tech leggings are an incredibly warm merino base layer designed for the coldest months of the year. They are ideal for skiing, snowshoeing and other winter pursuits, making it the go-to piece for winter layering.

- 100% Merino - Soft merino fibers that regulates body temperature in all weather conditions and resists odors
- Gusset for mobility and comfort
- Flatlock seams to prevent friction

**Fabric Main:** 260gm<sup>2</sup> Jersey, 100% Merino Wool

**Fiber micron:** Merino Wool 18.9 micron

**Fit:** Slim

**Sizes:** XS-XL

**Ships:** 31-January-2022



IB104392001  
BLACK



### 175 Everyday SS Crewe



A classic, all-purpose base layer made with soft and breathable 100% merino wool rib knit fabric.

- 100% Merino - Soft merino fibers that regulates body temperature in all weather conditions and resists odors
- Rib fabric provides stretch and comfort

**Fabric Main:** 175gm<sup>2</sup> Rib, 100% Merino Wool

**Fiber micron:** Merino Wool 18.9 micron

**Fit:** Slim

**Sizes:** XS-XL

**Ships:** 31-January-2022



IB104470001  
BLACK



### 175 Everyday LS Crewe



A classic, all-purpose base layer made with soft and breathable 100% merino wool rib knit fabric.

- 100% Merino - Soft merino fibers that regulates body temperature in all weather conditions and resists odors
- Rib fabric provides stretch and comfort

**Fabric Main:** 175gm<sup>2</sup> Rib, 100% Merino Wool

**Fiber micron:** Merino Wool 18.9 micron

**Fit:** Slim

**Sizes:** XS-XL

**Ships:** 31-January-2022



IB104471001  
BLACK



### 175 Everyday Boy Shorts



Classic underwear made with soft and breathable 100% merino wool rib knit fabric.

- 100% Merino - Soft merino fibers that regulates body temperature in all weather conditions and resists odors
- Rib fabric provides stretch and comfort

**Fabric Main:** 175gm<sup>2</sup> Rib, 100% Merino Wool

**Fiber micron:** Merino Wool 18.9 micron

**Fit:** Slim

**Sizes:** XS-XL

**Ships:** 31-January-2022



IB104474001  
BLACK



### 175 Everyday Leggings



A classic, all-purpose base layer made with soft and breathable 100% merino wool rib knit fabric.

- 100% Merino - Soft merino fibers that regulates body temperature in all weather conditions and resists odors
- Rib fabric provides stretch and comfort

**Fabric Main:** 175gm<sup>2</sup> Rib, 100% Merino Wool

**Fiber micron:** Merino Wool 18.9 micron

**Fit:** Slim

**Sizes:** XS-XL

**Ships:** 31-January-2022



IB104476001  
BLACK





# Underwear.

Natural intimates feel soft and luxurious next to your skin, for all-day comfort that moves and breathes with your body.

### Sprite Racerback Bra



A soft and supportive women's racerback bra made with merino wool corespun fabric for durable performance, the Sprite Racerback Bra allows for full range of motion and all-day comfort.

- Merino Corespun - durable merino blend regulates body temperature in all weather conditions
- Bra cups insert
- Low support

**Fabric Main:** 150gm<sup>2</sup> Jersey Corespun, 83% Merino Wool, 12% Nylon, 5% LYCRA®

**Fiber micron:** Merino Wool 18.9 micron

**Fit:** Slim

**Sizes:** XS-XL

**Ships:** 31-January-2022



IB103020001  
BLACK



IB103020004  
GRITSTONE HTHR



IB103020345  
COSMIC  
NEW



IB103020344  
HAZE  
NEW



IB103020342  
GRAPE  
NEW

### Sprite Hot pants



Lightweight women's hot pants made with super-soft merino wool jersey corespun fabric for durable comfort, the Sprite Hot Pants feature a flattering slim fit and offset seams for all-day comfort during active or casual use.

- Merino Corespun - durable merino blend regulates body temperature in all weather conditions.

**Fabric Main:** 150gm<sup>2</sup> Jersey Corespun, 83% Merino Wool, 12% Nylon, 5% LYCRA®

**Fiber micron:** Merino Wool 18.9 micron

**Fit:** Slim

**Sizes:** XS-XL

**Ships:** 31-January-2022



IB103023001  
BLACK



IB103023013  
GRITSTONE HTHR



IB103023345  
COSMIC  
NEW



IB103023344  
HAZE  
NEW



IB103023342  
GRAPE  
NEW

### Queens Clasp Bra

An adjustable everyday bra featuring merino for comfort.

- 100% Merino - Soft merino fibers that regulate body temperature in all weather conditions and resists odors
- Elastic straps with adjusters
- Hook and bar closure at back

**Fabric Main:** 200gm<sup>2</sup> Jersey, 100% Merino Wool

**Fiber micron:** Merino Wool 18.9 micron

**Fit:** Slim

**Sizes:** XS-XL

**Ships:** 28-February-2022



IB0A59HR001  
BLACK



IB0A59HR349  
HAZE/AOP  
NEW



### Queens High Cut Brief

A high cut brief featuring merino for comfort.

- 100% Merino - Soft merino fibers that regulate body temperature in all weather conditions and resists odors
- Elastic waistband

**Fabric Main:** 200gm<sup>2</sup> Jersey, 100% Merino Wool

**Fiber micron:** Merino Wool 18.9 micron

**Fit:** Slim

**Sizes:** XS-XL

**Ships:** 28-February-2022



IB0A59I2001  
BLACK



IB0A59I2349  
HAZE/AOP  
NEW



### Queens Tank Bodysuit

NEW STYLE

A bodysuit made from merino, versatile enough to be worn as top on it's own or layered under a shirt for comfort.

- 100% Merino - Soft merino fibers that regulate body temperature in all weather conditions and resists odors
- Gusset with snap closure
- Merino lining at bust
- Darts at bust for shaping and comfort

**Fabric Main:** 150gm<sup>2</sup> Jersey, 100% Merino Wool

**Fiber micron:** Merino Wool 18.9 micron

**Fit:** Slim

**Sizes:** XS-XL

**Ships:** 11-April-2022



IB0A56EN001  
BLACK  
NEW



IB0A56EN342  
GRAPE  
NEW



### Siren Bra

1/2

Featuring a slim, modern fit and our corespun merino wool fabric for durable comfort, the Siren Bra offers the support you need with a soft, sleek and stretchy construction.

- Merino Corespun - durable merino blend regulates body temperature in all weather conditions
- Space to insert bra cups
- Low support
- Adjustable straps

**Fabric Main:** 150gm<sup>2</sup> Jersey Corespun, 83% Merino Wool, 12% Nylon, 5% LYCRA®

**Fiber micron:** Merino Wool 18.9 micron

**Fit:** Slim

**Sizes:** XS-XL

**Ships:** 31-January-2022



IB103026001  
BLACK



IB103026344  
HAZE  
NEW



IB103026069  
LODEN  
NEW



IB103026347  
PRALINE  
NEW



### Siren Bra Cami

1/4

An everyday basic pure merino cami featuring shelf bra for extra support.

- 100% Merino - Soft merino fibers that regulate body temperature in all weather conditions and resists odors
- Internal built in bra with elastic band
- Bra cup inserts
- Adjustable straps

**Fabric Main:** 150gm<sup>2</sup> Jersey, 100% Merino Wool

**Fiber micron:** Merino Wool 18.9 micron

**Fit:** Slim

**Sizes:** XS-XL

**Ships:** 31-January-2022



IB0A56BL001  
BLACK



IB0A56BL004  
GRITSTONE HTHR

### Siren Cami



A soft and stretchy women's top made with our corespun merino wool blend fabric for durable comfort, the Siren Cami features a feminine scoop neck and adjustable straps for sleek everyday layering.

- Merino Corespun - durable merino blend regulates body temperature in all weather conditions
- Adjustable straps

**Fabric Main:** 150gm<sup>2</sup> Jersey Corespun, 83% Merino Wool, 12% Nylon, 5% LYCRA®

**Fiber micron:** Merino Wool 18.9 micron

**Fit:** Slim

**Sizes:** XS-XL

**Ships:** 31-January-2022



IB103193001  
BLACK



IB103193101  
SNOW



IB103193004  
GRITSTONE HTHR

### Siren Tank



A soft and stretchy women's tank top made with our corespun merino wool blend fabric for durable comfort, the Siren Tank features a feminine scoop neck and sleek design for everyday comfort and layering.

- Merino Corespun - durable merino blend regulates body temperature in all weather conditions.

**Fabric Main:** 150gm<sup>2</sup> Jersey Corespun, 83% Merino Wool, 12% Nylon, 5% LYCRA®

**Fiber micron:** Merino Wool 18.9 micron

**Fit:** Slim

**Sizes:** XS-XL

**Ships:** 31-January-2022



IB103213001  
BLACK



IB103213004  
GRITSTONE HTHR



IB103213CU6  
MIDNIGHT NAVY



IB103213101  
SNOW



IB103213069  
LODÉN



IB103213347  
PRALINE  
NEW



IB103213342  
GRAPE  
NEW



IB103213344  
HAZE  
NEW

### Siren SS Sweetheart



A soft and stretchy women's short sleeve T-shirt, the Siren Short Sleeve Sweetheart features a slim fit and our corespun merino wool blend fabric with a sweetheart neckline for everyday comfort and layering.

- Merino Corespun - durable merino blend regulates body temperature in all weather conditions.

**Fabric Main:** 150gm<sup>2</sup> Jersey Corespun, 83% Merino Wool, 12% Nylon, 5% LYCRA®

**Fiber micron:** Merino Wool 18.9 micron

**Fit:** Slim

**Sizes:** XS-XL

**Ships:** 31-January-2022



IB103062001  
BLACK



IB103062004  
GRITSTONE HTHR



IB103062423  
MIDNIGHT NAVY



IB103062069  
LODÉN  
NEW



IB103062347  
PRALINE  
NEW

### Siren LS Sweetheart



A soft and stretchy women's long sleeve T-shirt, the Siren Long Sleeve Sweetheart features a slim fit and our corespun merino wool blend fabric with a sweetheart neckline for everyday comfort and layering.

- Merino Corespun - durable merino blend regulates body temperature in all weather conditions.

**Fabric Main:** 150gm<sup>2</sup> Jersey Corespun, 83% Merino Wool, 12% Nylon, 5% LYCRA®

**Fiber micron:** Merino Wool 18.9 micron

**Fit:** Slim

**Sizes:** XS-XL

**Ships:** 31-January-2022



IB103194001  
BLACK



IB103194004  
GRITSTONE HTHR

### Siren Thong



A simple, soft and stretchy women's thong for minimalist comfort, the Siren Thong features our corespun merino wool blend fabric for durable, bulk-free performance during active or casual use.

- Merino Corespun - durable merino blend regulates body temperature in all weather conditions.

**Fabric Main:** 150gm<sup>2</sup> Jersey Corespun, 83% Merino Wool, 12% Nylon, 5% LYCRA®

**Fiber micron:** Merino Wool 18.9 micron

**Fit:** Slim

**Sizes:** XS-XL

**Ships:** 31-January-2022



IB103027001  
BLACK



IB103027347  
PRALINE  
NEW



IB103027069  
LODEN  
NEW

### Siren Bikini



Soft and stretchy women's bikini underwear with a modern slim fit, the Siren Bikini features our corespun merino wool blend and provides enough coverage with the best possible fit and shape for go-to, everyday comfort.

- Merino Corespun - durable merino blend regulates body temperature in all weather conditions.

**Fabric Main:** 150gm<sup>2</sup> Jersey Corespun, 83% Merino Wool, 12% Nylon, 5% LYCRA®

**Fiber micron:** Merino Wool 18.9 micron

**Fit:** Slim

**Sizes:** XS-XL

**Ships:** 31-January-2022



IB103164001  
BLACK



IB103164004  
GRITSTONE HTHR



IB103164069  
LODEN



IB103164423  
MIDNIGHT NAVY



IB103164342  
GRAPE  
NEW



IB103164347  
PRALINE  
NEW



IB103164344  
HAZE  
NEW

### Siren Hipkini



An ultra-comfy underwear bottom for everyday wear, the Siren Hipkini is made from our ultra-lightweight corespun merino jersey with a touch of LYCRA® for stretch.

- Merino Corespun - durable merino blend regulates body temperature in all weather conditions.

**Fabric Main:** 150gm<sup>2</sup> Jersey Corespun, 83% Merino Wool, 12% Nylon, 5% LYCRA®

**Fiber micron:** Merino Wool 18.9 micron

**Fit:** Slim

**Sizes:** XS-XL

**Ships:** 31-January-2022



IB104704001  
BLACK



IB104704013  
GRITSTONE HTHR



IB104704401  
MIDNIGHT NAVY



IB104704069  
LODEN  
NEW



IB104704342  
GRAPE  
NEW



IB104704344  
HAZE  
NEW



# First Layer.

Natural softness against your skin, for breathable comfort and climate control. Versatility, style, function and performance without compromise.

### ZoneKnit™ Cropped Bra-Tank

NEW STYLE

Our most breathable and lightweight Cropped Bra-Tank for high exertion activities incorporating ZoneKnit™ technology.



- ZoneKnit™ - Body mapping technology designed to actively regulate body temperature and let skin breathe during high-intensity activity.
- Cool-Lite™ - A lightweight and breathable fabric blend that is designed to wick moisture away from the body
- Eyelet mesh back for ventilation
- Built in bra with removable cups and elastic band
- Flatlock seams to prevent friction
- Low support

**Front Main:** 150gm<sup>2</sup> Cool-Lite™ Jersey, 60% TENCEL™, 40% Merino Wool

**Fabric Mesh:** 150gm<sup>2</sup> Cool-Lite™ Eyelet, 58% TENCEL™, 42% Merino Wool

**Fiber micron:** Merino Wool 18.9 micron

**Fit:** Slim

**Sizes:** XS-XL

**Ships:** 31-January-2022



IB0A56FC001  
BLACK  
NEW



IB0A56FC344  
HAZE  
NEW



### ZoneKnit™ SS Tee

Our most breathable and lightweight tee for high exertion activities incorporating ZoneKnit™ technology.

- ZoneKnit™ - Body mapping technology designed to actively regulate body temperature and let skin breathe during high-intensity activity.
- Cool-Lite™ - A lightweight and breathable fabric blend that is designed to wick moisture away from the body
- Eyelet mesh back and sleeves for ventilation
- Offset shoulder seams to prevent friction

**Fabric Main:** 130gm<sup>2</sup> Cool-Lite™ Jersey, 52% Merino Wool, 35% TENCEL™, 13% Nylon

**Fabric Mesh:** 135gm<sup>2</sup> Cool-Lite™ Eyelet, 51% Merino Wool, 35% TENCEL™, 14% Nylon

**Fiber micron:** Merino Wool 18.9 micron

**Fit:** Regular

**Sizes:** XS-XL

**Ships:** 31-January-2022



IB0A59LJ001  
BLACK



IB0A59LJ343  
COSMIC/GRAPE/CB  
NEW



IB0A59LJ344  
HAZE  
NEW

### ZoneKnit™ Tank

Our most breathable and lightweight tank for high exertion activities incorporating ZoneKnit™ technology.



- ZoneKnit™ - Body mapping technology designed to actively regulate body temperature and let skin breathe during high-intensity activity.
- Cool-Lite™ - A lightweight and breathable fabric blend that is designed to wick moisture away from the body
- Eyelet mesh back for ventilation
- Offset shoulder seams to prevent friction

**Front Main:** 130gm<sup>2</sup> Cool-Lite™ Jersey Corespun, 52% Merino Wool, 35% TENCEL™, 13% Nylon

**Fabric Mesh:** 135gm<sup>2</sup> Cool-Lite™ Eyelet, 51% Merino Wool, 35% TENCEL™, 14% Nylon

**Fiber micron:** Merino Wool 18.9 micron

**Fit:** Regular

**Sizes:** XS-XL

**Ships:** 31-January-2022



IB0A59LL001  
BLACK



IB0A59LL343  
COSMIC/GRAPE/CB  
NEW

### Sphere II Tank

UPDATED STYLE



A soft and comfortable women's tank tee made with our 100% natural Cool-Lite™ merino wool lightweight jersey fabric.

- Cool-Lite™ - A lightweight and breathable fabric blend that is designed to wick moisture away from the body
- Offset shoulder seams to prevent friction
- Drop tail hem for added coverage

**Fabric Main:** 150gm<sup>2</sup> Cool-Lite™ Jersey, 60% TENCEL™, 40% Merino Wool

**Fiber micron:** Merino Wool 18.9 micron

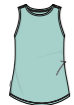
**Fit:** Regular

**Sizes:** XS-XL

**Ships:** 31-January-2022



IB0A56EZ001  
BLACK  
NEW



IB0A56EZ344  
HAZE  
NEW



IB0A56EZ342  
GRAPE  
NEW



### Sphere II SS Tee

UPDATED STYLE

A soft and comfortable women's short sleeve tee made with our 100% natural Cool-Lite™ merino wool lightweight jersey fabric featuring a mid-scoop neckline.

- Cool-Lite™ - A lightweight and breathable fabric blend that is designed to wick moisture away from the body
- Offset shoulder seams to prevent friction
- Drop tail hem for added coverage

**Fabric Main:** 150gm<sup>2</sup> Cool-Lite™ Jersey, 60% TENCEL™, 40% Merino Wool

**Fiber micron:** Merino Wool 18.9 micron

**Fit:** Regular

**Sizes:** XS-XL

**Ships:** 31-January-2022



IB0A56D3001  
BLACK  
NEW



IB0A56D3016  
METRO HTHR  
NEW



IB0A56D3440  
MIDNIGHT  
NAVY HTHR  
NEW



IB0A56D3345  
COSMIC  
NEW

### Sphere II SS Scoop Tee

UPDATED STYLE



A soft and comfortable women's short sleeve tee made with our 100% natural Cool-Lite™ merino wool lightweight jersey fabric featuring a scoop neckline.

- Cool-Lite™ - A lightweight and breathable fabric blend that is designed to wick moisture away from the body
- Offset shoulder seams to prevent friction
- Drop tail hem for added coverage

**Fabric Main:** 150gm<sup>2</sup> Cool-Lite™ Jersey, 60% TENCEL™, 40% Merino Wool

**Fiber micron:** Merino Wool 18.9 micron

**Fit:** Regular

**Sizes:** XS-XL

**Ships:** 31-January-2022



IB0A56EY001  
BLACK  
NEW



IB0A56EY344  
HAZE  
NEW



IB0A56EY342  
GRAPE  
NEW



### Sphere II LS Tee

UPDATED STYLE

A soft and comfortable women's long sleeve tee made with our 100% natural Cool-Lite™ merino wool lightweight jersey fabric featuring a mid-scoop neckline.

- Cool-Lite™ - A lightweight and breathable fabric blend that is designed to wick moisture away from the body
- Offset shoulder seams to prevent friction
- Drop tail hem for added coverage

**Fabric Main:** 150gm<sup>2</sup> Cool-Lite™ Jersey, 60% TENCEL™, 40% Merino Wool

**Fiber micron:** Merino Wool 18.9 micron

**Fit:** Regular

**Sizes:** XS-XL

**Ships:** 31-January-2022



IB0A56EJ001  
BLACK  
NEW



IB0A56EJ016  
METRO HTHR  
NEW



IB0A56EJ344  
HAZE  
NEW





### Granary SS Tee

NEW STYLE

A classic relaxed fit short sleeve tee in merino wool offering everyday comfort and style.

- 100% Merino - Soft merino fibers that regulate body temperature in all weather conditions and resists odors
- Rib neck

**Front Main:** 150gm<sup>2</sup> Jersey, 100% Merino Wool

**Fiber micron:** Merino Wool 18.9 micron

**Fit:** Relaxed

**Sizes:** XS-XL

**Ships:** 31-January-2022



IB0A56EM001  
BLACK  
NEW



IB0A56EM016  
METRO HTHR  
NEW



IB0A56EM342  
GRAPE  
NEW



### Granary SS Tee Stripe

NEW STYLE

A classic relaxed fit short sleeve tee in merino wool offering everyday comfort and style.

- 100% Merino - Soft merino fibers that regulate body temperature in all weather conditions and resists odors
- Rib neck

**Front Main:** 150gm<sup>2</sup> Jersey, 100% Merino Wool

**Fiber micron:** Merino Wool 18.9 micron

**Fit:** Relaxed

**Sizes:** XS-XL

**Ships:** 31-January-2022



IB0A56C1329  
MIDNIGHT NAVY/  
SNOW/S  
NEW



IB0A56C1472  
SAND/  
ECRU HTHR/S  
NEW



### Granary LS Tee

UPDATED STYLE

A classic relaxed fit long sleeve tee in all natural merino wool offering everyday comfort and style.

- 100% Merino - Soft merino fibers that regulate body temperature in all weather conditions and resists odors
- Rib neck

**Front Main:** 150gm<sup>2</sup> Jersey, 100% Merino Wool

**Fiber micron:** Merino Wool 18.9 micron

**Fit:** Relaxed

**Sizes:** XS-XL

**Ships:** 31-January-2022



IB0A56D4001  
BLACK  
NEW



IB0A56D4016  
METRO HTHR  
NEW



### Drayden Reversible SS Top

UPDATED STYLE

A versatile women's everyday lifestyle jersey top designed to be worn either frontwards for a soft V neck, or worn backwards for a high crew neck.

- Cool-Lite™ - A lightweight and breathable fabric blend that is designed to wick moisture away from the body
- Reversible - can be worn frontwards for soft V or backwards for crew neck

**Front Main:** 150gm<sup>2</sup> Cool-Lite™ Jersey, 60% TENCEL™, 40% Merino Wool

**Fiber micron:** Merino Wool 18.9 micron

**Fit:** Relaxed

**Sizes:** XS-XL

**Ships:** 28-February-2022



IB0A56ES401  
MIDNIGHT NAVY  
NEW



IB0A56ES016  
METRO HTHR  
NEW

### Wave SS Tee Stripe

NEW STYLE



A classic lightweight short sleeve striped crew neck jersey tee that's perfect for warm weather and made from our Cool-Lite™ blend of merino wool and TENCEL™.

- Cool-Lite™ - A lightweight and breathable fabric blend that is designed to wick moisture away from the body
- Offset shoulder seams

**Fabric Main:** 150gm<sup>2</sup> Cool-Lite™ Jersey, 60% TENCEL™, 40% Merino Wool

**Fiber micron:** Merino Wool 18.9 micron

**Fit:** Regular

**Sizes:** XS-XL

**Ships:** 11–April–2022



IB0A56DJ475  
GRAPE/MIDNIGHT  
NAVY/S  
NEW



IB0A56DJ388  
HAZE/AZUL/S  
NEW



IB0A56DJ469  
METRO HTHR/  
LODEN/S  
NEW



### Wave LS Tee Stripe

NEW STYLE

A classic lightweight long sleeve striped crew neck jersey tee that's perfect for warm weather and made from our Cool-Lite™ blend of merino wool and TENCEL™.

- Cool-Lite™ - A lightweight and breathable fabric blend that is designed to wick moisture away from the body
- Offset shoulder seams

**Fabric Main:** 150gm<sup>2</sup> Cool-Lite™ Jersey, 60% TENCEL™, 40% Merino Wool

**Fiber micron:** Merino Wool 18.9 micron

**Fit:** Regular

**Sizes:** XS-XL

**Ships:** 11–April–2022



IB0A56DI475  
GRAPE/MIDNIGHT  
NAVY/S  
NEW



IB0A56DI388  
HAZE/AZUL/S  
NEW

### Drayden Sleeveless Top

UPDATED STYLE



An everyday sleeveless women's jersey top made from our Cool-Lite™ blend of merino wool and TENCEL™ offering cool comfort.

- Cool-Lite™ - A lightweight and breathable fabric blend that is designed to wick moisture away from the body
- High crew neck
- Wide shoulder with micro cap sleeve

**Fabric Main:** 150gm<sup>2</sup> Cool-Lite™ Jersey, 60% TENCEL™, 40% Merino Wool

**Fiber micron:** Merino Wool 18.9 micron

**Fit:** Relaxed

**Sizes:** XS-XL

**Ships:** 28–February–2022



IB0A56ER401  
MIDNIGHT NAVY  
NEW



IB0A56ER016  
METRO HTHR  
NEW



100% PURE MERINO



### Tech Lite II SS Polo

NEW STYLE

A classic merino wool jersey polo offering softness and comfort for everyday.

- 100% Merino - Soft merino fibers that regulate body temperature in all weather conditions and resists odors
- Drop tail hem for added coverage
- Fully fashioned rib collar

**Fabric Main:** 150gm<sup>2</sup> Jersey, 100% Merino Wool

**Fiber micron:** Merino Wool 18.9 micron

**Fit:** Regular

**Sizes:** XS-XL

**Ships:** 31–January–2022



IB0A56DB001  
BLACK  
NEW



### Tech Lite II SS Tee

Our versatile merino wool Tech Lite II Short Sleeve Tee provides comfort, breathability and odor-resistance for just about any adventure you can think of.

- 100% Merino - Soft merino fibers that regulate body temperature in all weather conditions and resists odors
- Offset shoulder seams to prevent friction

**Fabric Main:** 150gm<sup>2</sup> Jersey, 100% Merino Wool

**Fiber micron:** Merino Wool 18.9 micron

**Fit:** Regular

**Sizes:** XS-XL

**Ships:** 31-January-2022



IB0A59J9001  
BLACK



IB0A59J9004  
GRITSTONE HTHR



IB0A59J9401  
MIDNIGHT NAVY  
NEW



IB0A59J9342  
GRAPE  
NEW



IB0A59J9069  
LODEN  
NEW



IB0A59J9708  
SAFFLOWER  
NEW



### Tech Lite II SS Tee Trailhead

NEW STYLE

Our versatile merino wool Tech Lite II Short Sleeve Tee provides comfort, breathability and odor-resistance for just about any adventure you can think of. This tech tee features a retro inspired print of a moon lit trail in Queenstown, New Zealand.

- 100% Merino - Soft merino fibers that regulate body temperature in all weather conditions and resists odors
- Offset shoulder seams to prevent friction.

**Fabric Main:** 150gm<sup>2</sup> Jersey, 100% Merino Wool

**Fiber micron:** Merino Wool 18.9 micron

**Fit:** Regular

**Sizes:** XS-XL

**Ships:** 31-January-2022



IB0A56DR016  
METRO HTHR  
NEW



IB0A56DR069  
LODEN  
NEW



IB0A56DR342  
GRAPE  
NEW



### Tech Lite II SS Tee Mountain Lake

NEW STYLE

Our versatile merino wool Tech Lite II Short Sleeve Tee provides comfort, breathability and odor-resistance for just about any adventure you can think of. This tech tee features a playful illustration of mountains and flowers in spring time.

- 100% Merino - Soft merino fibers that regulate body temperature in all weather conditions and resists odors
- Offset shoulder seams to prevent friction.

**Fabric Main:** 150gm<sup>2</sup> Jersey, 100% Merino Wool

**Fiber micron:** Merino Wool 18.9 micron

**Fit:** Regular

**Sizes:** XS-XL

**Ships:** 31-January-2022



IB0A56DS001  
BLACK  
NEW



IB0A56DS344  
HAZE  
NEW



IB0A56DS004  
GRITSTONE HTHR  
NEW



### Tech Lite II SS Tee The Ram Herder

NEW STYLE

Our versatile merino wool Tech Lite II Short Sleeve Tee provides comfort, breathability and odor-resistance for just about any adventure you can think of. This tech tee features a graphic by artist Araki Koman. This tech tee features an illustration of a shepherdess, herding a ram under the moonlight.

- 100% Merino - Soft merino fibers that regulate body temperature in all weather conditions and resists odors
- Offset shoulder seams to prevent friction.

**Fabric Main:** 150gm<sup>2</sup> Jersey, 100% Merino Wool

**Fiber micron:** Merino Wool 18.9 micron

**Fit:** Regular

**Sizes:** XS-XL

**Ships:** 28-February-2022



IB0A56DP001  
BLACK  
NEW



IB0A56DP069  
LODEN  
NEW



### Tech Lite II SS Tee Moon Sonnet

NEW STYLE

Our versatile merino wool Tech Lite II Short Sleeve Tee provides comfort, breathability and odor-resistance for just about any adventure you can think of. This tech tee features a graphic by artist Araki Koman - an illustration inspired by the moon cycles and its effects on tides, plants and humans.

- 100% Merino - Soft merino fibers that regulate body temperature in all weather conditions and resists odors
- Offset shoulder seams to prevent friction.

**Fabric Main:** 150gm<sup>2</sup> Jersey, 100% Merino Wool

**Fiber micron:** Merino Wool 18.9 micron

**Fit:** Regular

**Sizes:** XS-XL

**Ships:** 28—February—2022



IB0A56DT401  
MIDNIGHT NAVY  
NEW



IB0A56DT342  
GRAPE  
NEW



### Tech Lite II SS Tee Nature has the Answers

NEW STYLE

Our versatile merino wool Tech Lite II Short Sleeve Tee provides comfort, breathability and odor-resistance for just about any adventure you can think of. This tech tee features a graphic by artist Mélanie Johnsson - a fun illustration of our inquisitive interest in nature.

- 100% Merino - Soft merino fibers that regulate body temperature in all weather conditions and resists odors
- Offset shoulder seams to prevent friction.

**Fabric Main:** 150gm<sup>2</sup> Jersey, 100% Merino Wool

**Fiber micron:** Merino Wool 18.9 micron

**Fit:** Regular

**Sizes:** XS-XL

**Ships:** 11—April—2022



IB0A56DQ344  
HAZE  
NEW



### Tech Lite II SS Scoop Tee Women's Circle

NEW STYLE

Our versatile merino wool Tech Lite II Short Sleeve Scoop Tee provides comfort, breathability and odor-resistance for just about any adventure you can think of. This tech tee features a graphic by artist Araki Koman. Her wish is to inspire people to slow down, appreciate the beauty of simplicity and live more consciously.

- 100% Merino - Soft merino fibers that regulate body temperature in all weather conditions and resists odors
- Offset shoulder seams to prevent friction

**Fabric Main:** 150gm<sup>2</sup> Jersey, 100% Merino Wool

**Fiber micron:** Merino Wool 18.9 micron

**Fit:** Regular

**Sizes:** XS-XL

**Ships:** 28—February—2022



IB0A56DY401  
MIDNIGHT NAVY  
NEW



IB0A56DY069  
LODDE  
NEW



### Tech Lite II SS Scoop Tee Hill Sprint

NEW STYLE

Our versatile merino wool Tech Lite II Short Sleeve Scoop Tee provides comfort, breathability and odor-resistance for just about any adventure you can think of. This tech tee features a cycling graphic.

- 100% Merino - Soft merino fibers that regulate body temperature in all weather conditions and resists odors
- Offset shoulder seams to prevent friction

**Fabric Main:** 150gm<sup>2</sup> Jersey, 100% Merino Wool

**Fiber micron:** Merino Wool 18.9 micron

**Fit:** Regular

**Sizes:** XS-XL

**Ships:** 31—January—2022



IB0A56DU001  
BLACK  
NEW



IB0A56DU345  
COSMIC  
NEW



IB0A56DU069  
LODDE  
NEW



### Tech Lite II SS Scoop Tee Swarming Shapes

NEW STYLE

Our versatile merino wool Tech Lite II Short Sleeve Scoop Tee provides comfort, breathability and odor-resistance for just about any adventure you can think of. This tech tee features an illustration of a murmuration, a natural phenomenon of swarming birds.

- 100% Merino - Soft merino fibers that regulate body temperature in all weather conditions and resists odors
- Offset shoulder seams to prevent friction

**Fabric Main:** 150gm<sup>2</sup> Jersey, 100% Merino Wool

**Fiber micron:** Merino Wool 18.9 micron

**Fit:** Regular

**Sizes:** XS-XL

**Ships:** 31-January-2022



IB0A56DW001  
BLACK  
NEW



IB0A56DW401  
MIDNIGHT NAVY  
NEW



IB0A56DW342  
GRAPE  
NEW



### Tech Lite II SS Scoop Tee Fabulous Ferns

NEW STYLE

Our versatile merino wool Tech Lite II Short Sleeve Scoop Tee provides comfort, breathability and odor-resistance for just about any adventure you can think of. This tech tee features a fun illustration of popular indoor plants.

- 100% Merino - Soft merino fibers that regulate body temperature in all weather conditions and resists odors
- Offset shoulder seams to prevent friction

**Fabric Main:** 150gm<sup>2</sup> Jersey, 100% Merino Wool

**Fiber micron:** Merino Wool 18.9 micron

**Fit:** Regular

**Sizes:** XS-XL

**Ships:** 31-January-2022



IB0A56DZ016  
METRO HTHR  
NEW



IB0A56DZ344  
HAZE  
NEW



### Tech Lite II SS Scoop Tee Canopy Camper

NEW STYLE

Our versatile merino wool Tech Lite II Short Sleeve Scoop Tee provides comfort, breathability and odor-resistance for just about any adventure you can think of. This tech tee features a camping illustration of the great outdoors with the message "Move to Natural".

- 100% Merino - Soft merino fibers that regulate body temperature in all weather conditions and resists odors
- Offset shoulder seams to prevent friction

**Fabric Main:** 150gm<sup>2</sup> Jersey, 100% Merino Wool

**Fiber micron:** Merino Wool 18.9 micron

**Fit:** Regular

**Sizes:** XS-XL

**Ships:** 31-January-2022



IB0A56DX001  
BLACK  
NEW



IB0A56DX345  
COSMIC  
NEW



IB0A56DX708  
SAFFLOWER  
NEW



### Tech Lite II SS Scoop Tee 1000 Footsteps

NEW STYLE

Our versatile merino wool Tech Lite II Short Sleeve Scoop Tee provides comfort, breathability and odor-resistance for just about any adventure you can think of. This tech tee features an illustration of spots representative of our footprints and that each one has an impact.

- 100% Merino - Soft merino fibers that regulate body temperature in all weather conditions and resists odors
- Offset shoulder seams to prevent friction

**Fabric Main:** 150gm<sup>2</sup> Jersey, 100% Merino Wool

**Fiber micron:** Merino Wool 18.9 micron

**Fit:** Regular

**Sizes:** XS-XL

**Ships:** 31-January-2022



IB0A56DV381  
METRO HTHR/AOP  
NEW



IB0A56DV382  
GRAPE/AOP  
NEW



### Granary Tee Dress

NEW STYLE

A merino wool midi tee dress perfect for lounging or casual everyday excursions.

- 100% Merino - Soft merino fibers that regulate body temperature in all weather conditions and resists odors
- Side slits at hem
- Curved hem

**Fabric Main:** 150gm<sup>2</sup> Jersey, 100% Merino Wool

**Fiber micron:** Merino Wool 18.9 micron

**Fit:** Regular

**Sizes:** XS-XL

**Ships:** 11-April-2022



IB0A56EO001  
BLACK  
NEW



IB0A56EO069  
LODEN  
NEW

### Yanni Sleeveless Dress

- Cool-Lite™ fabric for comfort in warm to hot conditions.
- Nylon content for durability.
- LYCRA® content for stretch and mobility.
- Feminine scoop neck
- icebreaker pip label.

**Fabric Main:** 160gm<sup>2</sup> Jersey, 61% Merino Wool, 19% TENCEL®, 14% Nylon, 6% LYCRA®

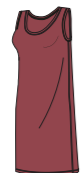
**Fit:** Regular

**Sizes:** XS-XL

**Ships:** 28-February-2022



IB105181001  
BLACK



IB105181342  
GRAPE  
NEW



# Mid Layer.

Insulating natural layers wrap your body in warmth, using innovative designs and technologies to shield you from the cold.



### ZoneKnit™ Insulated Vest

NEW STYLE

Designed for skiing, hiking and adventure. The ZoneKnit™ Insulated Vest features an insulated front panel and incorporates ZoneKnit™ technology

- 100% Merino - Soft merino fibers that regulate body temperature in all weather conditions and resists odors
- ZoneKnit™ - Body mapping technology designed to actively regulate body temperature and let skin breathe during high-intensity activity.
- Quilted insulated front panel that traps heat to keep you warm
- Double layer self standing collar
- Reinforced shoulder panels for carrying backpacks
- 2-way zip
- Zippered hand pockets
- Internal dump pockets that can fit a pair of gloves
- Drop tail hem for added coverage

**Fabric Main:** 12gg Knit, 100% Merino Wool

**Fiber micron:** Merino Wool 18.9 micron

**Fit:** Slim

**Sizes:** XS-XL

**Ships:** 31-January-2022



IB0A56FA001  
BLACK  
NEW



IB0A56FA338  
GRAPE/COSMIC  
NEW



### ZoneKnit™ Insulated LS Zip Hoodie

Designed for skiing, hiking and adventure. The ZoneKnit™ Insulated Hoodie features an insulated front panel and hood and incorporates ZoneKnit™ technology.

- 100% Merino - Soft merino fibers that regulate body temperature in all weather conditions and resists odors
- ZoneKnit™ - Body mapping technology designed to actively regulate body temperature and let skin breathe during high-intensity activity.
- Quilted insulated front panel that traps heat to keep you warm
- Insulated hood
- Raglan sleeve construction for mobility
- 2-way zip
- Zippered hand pockets
- Internal dump pockets that can fit a pair of gloves
- Drop tail hem for added coverage

**Fabric Main:** 12gg Knit, 100% Merino Wool

**Fiber micron:** Merino Wool 18.9 micron

**Fit:** Slim

**Sizes:** XS-XL

**Ships:** 31-January-2022



IB0A59HG001  
BLACK

### Cool-Lite™ LS Hoodie

NEW STYLE

A lightweight breathable performance hoodie designed for aerobic days outside when you need an extra layer to add a bit of protection.

- Cool-Lite™ - A lightweight and breathable fabric blend that is designed to wick moisture away from the body
- Fitted hood
- Raglan sleeve construction at front for mobility
- Set in sleeves at back with offset shoulder seams to prevent friction
- Thumb loops to keep your sleeves in place and hands warm
- Internal small secure pocket in wearer's right hand side seam
- Drop tail hem for added coverage

**Fabric Main:** 150gm<sup>2</sup> Cool-Lite™ Jersey, 60% TENCEL™, 40% Merino Wool

**Fiber micron:** Merino Wool 18.9 micron

**Fit:** Regular

**Sizes:** XS-XL

**Ships:** 31-January-2022



IB0A56EX001  
BLACK  
NEW



IB0A56EX342  
GRAPE  
NEW





### Quantum III LS Zip

NEW STYLE

A technical slim-fit midlayer that is ideal for mountain adventures like hiking and skiing, the Quantum Long Sleeve Zip helps regulate your body temperature.

- 100% Merino - Soft merino fibers that regulate body temperature in all weather conditions and resists odors
- Thumb loops to keep your sleeves in place and hands warm
- Offset shoulder seams to prevent friction
- 2-way zip
- Zipper chin guard to prevents friction
- Zippered hand and chest pockets
- Internal dump pockets that fit's a pair of gloves
- Drop tail hem for added coverage
- Side seams from underarm to finish at hem towards the back for comfort

**Fabric Main:** 270gm<sup>2</sup> Unbrushed Baby Terry, 100% Merino Wool

**Fiber micron:** Merino Wool 20.9 micron

**Fit:** Slim

**Sizes:** XS-XL

**Ships:** 31-January-2022



IB0A56FO01  
BLACK  
NEW



IB0A56FO341  
HAZE/AZUL  
NEW



### Quantum III LS Zip Hoodie

A slim-fit midlayer that is ideal for technical mountain adventures like hiking and skiing, the Quantum Long Sleeve Zip Hoodie helps regulate your body temperature.

- 100% Merino - Soft merino fibers that regulate body temperature in all weather conditions and resists odors
- Fitted hood
- Thumb loops to keep your sleeves in place and hands warm
- Offset shoulder seams to prevent friction
- 2-way zip
- Zipper chin guard to prevents friction
- Zippered hand and chest pockets
- Drop tail hem for added coverage
- Internal dump pockets that fit's a pair of gloves
- Side seams from underarm to finish at hem towards the back for comfort

**Fabric Main:** 270gm<sup>2</sup> Unbrushed Baby Terry, 100% Merino Wool

**Fiber micron:** Merino Wool 20.9 micron

**Fit:** Slim

**Sizes:** XS-XL

**Ships:** 31-January-2022



IB0A59JW001  
BLACK



IB0A59JW056  
METRO HTHR/BLACK  
NEW



IB0A59JW340  
COSMIC/GRAPE  
NEW



IB0A59JW341  
HAZE/AZUL  
NEW



### Descender LS Zip

A technical women's merino wool fleece mid layer, the Descender Long Sleeve Zip is designed for cold, aerobic days outside.

- RealFleece™ - An authentic brushed merino wool that is naturally warm and soft to the touch
- Thumb loops keep your sleeves in place and hands warm
- Offset shoulder seams to prevent friction
- Flatlock seams to prevent friction
- Zipper chin guard and interior storm flap to prevent friction
- Zippered hand pockets
- Merino pocket lining for added comfort
- Drop tail hem for added coverage;

**Fabric Main:** 240gm<sup>2</sup> RealFleece™ Textured Brushed Terry, 84% Merino Wool, 9% Nylon, 7% LYCRA®

**Fabric Panels:** 200gm<sup>2</sup> Unbrushed Baby Terry Corespun, 88% Merino Wool, 9% Nylon, 3% LYCRA®

**Fiber micron:** Merino Wool 18.9 micron

**Fit:** Slim

**Sizes:** XS-XL

**Ships:** 31-January-2022



IB103900A01  
JET HTHR/BLACK  
NEW



IB103900340  
COSMIC/GRAPE  
NEW



### Wilcox LS Sweater

NEW STYLE

A classic everyday fine gauge merino wool sweater for those days you need an extra lightweight layer.

- 100% Merino - Soft merino fibers that regulate body temperature in all weather conditions and resists odors
- Rib neck, sleeve cuffs and bottom hem
- Fully Fashioned

**Fabric Main:** 14gg Knit , 100% Merino Wool

**Fiber micron:** Merino Wool 18.9 micron

**Fit:** Regular

**Sizes:** XS-XL

**Ships:** 31-January-2022



IB0A56DC069  
LODEN  
NEW



IB0A56DC342  
GRAPE  
NEW



### Wilcox LS V Sweater

NEW STYLE

A classic everyday fine gauge merino wool sweater for those days you need an extra lightweight layer.

- 100% Merino - Soft merino fibers that regulate body temperature in all weather conditions and resists odors
- Rib neck, sleeve cuffs and bottom hem
- Fully Fashioned

**Fabric Main:** 14gg Knit , 100% Merino Wool

**Fiber micron:** Merino Wool 18.9 micron

**Fit:** Regular

**Sizes:** XS-XL

**Ships:** 31-January-2022



IB0A56DD401  
MIDNIGHT NAVY  
NEW



IB0A56DD347  
PRALINE  
NEW



### Helliers Terry LS Sweatshirt

NEW STYLE

An classic, everyday, regular fit sweatshirt that is ideal for layering, made in comfortable and soft merino wool terry.

- 100% Merino (main fabric) - Soft merino fibers that regulate body temperature in all weather conditions and resists odors
- Raglan sleeve construction for mobility
- Rib neck, sleeve cuffs and bottom hem
- Internal kangaroo pocket

**Fabric Main:** 270gm<sup>2</sup> Unbrushed Baby Terry, 100% Merino Wool

**Fabric Cuffs, Hem:** 425gm<sup>2</sup> 2x2 Rib, 98% Merino Wool, 2% LYCRA®

**Fiber micron:** Merino Wool 20.9 micron

**Fit:** Regular

**Sizes:** XS-XL

**Ships:** 31-January-2022



IB0A56CL001  
BLACK  
NEW



IB0A56CL342  
GRAPE  
NEW



### Helliers Terry LS Zip Hoodie

NEW STYLE

An classic, everyday, regular fit long sleeve zip hoodie that is ideal for layering, made in comfortable and soft merino wool terry.

- 100% Merino (main fabric) - Soft merino fibers that regulate body temperature in all weather conditions and resists odors
- Adjustable hood with drawcord
- Raglan sleeve construction for mobility
- Rib cuffs and hem

**Fabric Main:** 270gm<sup>2</sup> Unbrushed Baby Terry, 100% Merino Wool

**Fabric Cuffs, Hem:** 425gm<sup>2</sup> 2x2 Rib, 98% Merino Wool, 2% LYCRA®

**Fiber micron:** Merino Wool 20.9 micron

**Fit:** Regular

**Sizes:** XS-XL

**Ships:** 31-January-2022



IB0A56CM001  
BLACK  
NEW



IB0A56CM004  
GRITSTONE HTHR  
NEW



# Bottoms.

Versatile pants, shorts and tights stretch dynamically with you, breathing next to your skin and wicking away moisture for comfort on the move.

### Fastray High Rise Shorts

NEW STYLE

For active performance on or off the trail, these shorts are form fitting, functional and naturally breathable.



- High waist for added coverage
- Wide elasticized waistband
- Flatlock seams at the back for contouring
- Gusset for mobility and comfort
- Flatlock seams to prevent friction
- Stash pocket at wearer's right leg that fits a phone
- Squat proof

**Fabric Main:** 250gm<sup>2</sup> Jersey, 97% Merino Wool, 3% LYCRA®

**Fiber micron:** Merino Wool 18.9 micron

**Fit:** Slim

**Sizes:** XS-XL

**Ships:** 31-January-2022



IB0A56FF001  
BLACK  
NEW



IB0A56FF342  
GRAPE  
NEW



### Fastray High Rise Tights

NEW STYLE

For active performance on or off the trail, these tights are form fitting, functional and naturally breathable.

- High waist for added coverage
- Wide elasticized waistband
- Flatlock seams at the back for contouring
- Gusset for mobility and comfort
- Flatlock seams to prevent friction
- Stash pocket at wearer's right leg that fits a phone
- Squat proof

**Fabric Main:** 250gm<sup>2</sup> Jersey, 97% Merino Wool, 3% LYCRA®

**Fiber micron:** Merino Wool 18.9 micron

**Fit:** Slim

**Sizes:** XS-XL

**Ships:** 31-January-2022



IB0A56EW001  
BLACK  
NEW



IB0A56EW342  
GRAPE  
NEW

### Fastray High Rise Tights Forest Shadows

NEW STYLE

For active performance on or off the trail, these tights are form fitting, functional and naturally breathable.



- High waist for added coverage
- Wide elasticized waistband
- Flatlock seams at the back for contouring
- Gusset for mobility and comfort
- Flatlock seams to prevent friction
- Stash pocket at wearer's right leg that fits a phone
- Squat proof

**Fabric Main:** 250gm<sup>2</sup> Jersey, 97% Merino Wool, 3% LYCRA®

**Fiber micron:** Merino Wool 18.9 micron

**Fit:** Slim

**Sizes:** XS-XL

**Ships:** 31-January-2022



IB0A56FJ381  
METRO HTHR/AOP  
NEW



### Impulse Running Shorts

The ideal women's shorts for training or race day, the Impulse Running Shorts provide optimal comfort in all conditions, featuring our soft, durable merino Cool-Lite™ fabric.

- Cool-Lite™ - A lightweight and breathable fabric blend that is designed to wick moisture away from the body
- Waistband with internal drawcord for adjustability
- Gusset for mobility and comfort
- Power mesh stash pocket inside liner of short
- PFC Free durable water repellent finish - for light rain protection

**Fabric Main:** 55gm<sup>2</sup> woven with PFC-free DWR finish, 46% Recycled Nylon, 44% Nylon, 10% LYCRA®

**Fabric Mesh:** 145gm<sup>2</sup> eyelet corespun, 51% Merino, 35% TENCEL®, 14% Nylon

**Fit:** Regular

**Sizes:** XS-XL

**Ships:** 28-February-2021



IB104618010  
BLACK

### Berlin Skirt

NEW STYLE

A classic and versatile chino skirt made from a unique blend of all natural merino wool and organic cotton.



- Merino-Cotton – durable merino blend that is breathable and comfortable
- Belt loops
- Front fly with zip closure
- Hand pockets
- Back welt pockets with button on right side
- Natural Corozo buttons

**Fabric Main:** 255gm<sup>2</sup> Woven Twill, 70% Merino Wool, 30% Organic Cotton

**Fiber micron:** Merino Wool 20.9 micron

**Fit:** Regular

**Sizes:** 26, 27, 28, 29, 30, 31, 32, 33

**Ships:** 11–April–2022



IB0A56EL001  
BLACK  
NEW

### Berlin Shorts

NEW STYLE

A classic and versatile chino short made from a unique blend of all natural merino wool and organic cotton.



- Merino-Cotton – durable merino blend that is breathable and comfortable
- Belt loops
- Front fly with zip closure
- Internal french bearer
- Hand pockets
- Back welt pockets with button on right side
- Natural Corozo buttons

**Fabric Main:** 255gm<sup>2</sup> Woven Twill, 70% Merino Wool, 30% Organic Cotton

**Fiber micron:** Merino Wool 20.9 micron

**Fit:** Regular

**Sizes:** 26, 27, 28, 29, 30, 31, 32, 33

**Ships:** 11–April–2022



IB0A56G5001  
BLACK  
NEW



IB0A56G5101  
SNOW  
NEW

### Berlin Pants

NEW STYLE

A classic and versatile chino pant made from a unique blend of all natural merino wool and organic cotton.



- Merino-Cotton – durable merino blend that is breathable and comfortable
- Belt loops
- Front fly with zip closure
- Internal french bearer
- Hand pockets
- Back welt pockets with button on right side
- Natural Corozo buttons

**Fabric Main:** 255gm<sup>2</sup> Woven Twill, 70% Merino Wool, 30% Organic Cotton

**Fiber micron:** Merino Wool 20.9 micron

**Fit:** Regular

**Sizes:** 26, 27, 28, 29, 30, 31, 32, 33

**Ships:** 11–April–2022



IB0A56EK001  
BLACK  
NEW



IB0A56EK101  
SNOW  
NEW

### Drayden Culottes

NEW STYLE

A classic versatile culotte now in our all natural Cool-Lite™ blend of merino wool and TENCEL™. Perfect for lounging at home, playing at the beach or urban explorations in natural comfort.



- Cool-Lite™ – A lightweight and breathable fabric blend that is designed to wick moisture away from the body
- Elastic waistband with external drawcord for adjustability
- Hand pockets

**Fabric Main:** 150gm<sup>2</sup> Cool-Lite™ Jersey, 60% TENCEL™, 40% Merino Wool

**Fiber micron:** Merino Wool 18.9 micron

**Fit:** Regular

**Sizes:** XS–XL

**Ships:** 28–February–2022



IB0A56EP001  
BLACK  
NEW



IB0A56EP004  
GRITSTONE HTHR  
NEW



### Crush Shorts

NEW STYLE

The ultimate in down-time comfort, the Crush Shorts are made with a luxuriously soft merino wool terry fabric.

- 100% Merino - Soft merino fibers that regulate body temperature in all weather conditions and resists odors
- Elastic waist with external drawcord
- Front slash pockets

**Fabric Main:** 270gm<sup>2</sup> Unbrushed Baby Terry, 100% Merino Wool

**Fiber micron:** Merino Wool 20.9 micron

**Fit:** Regular

**Sizes:** XS-XL

**Ships:** 11-April-2022



IB0A56D6001  
BLACK  
NEW



IB0A56D6342  
GRAPE  
NEW

### Crush Pants

The ultimate in down-time comfort, the Crush Pants are made with a luxuriously soft merino wool terry fabric.

- Merino Corespun - durable merino blend regulates body temperature in all weather conditions
- Elastic waist with external drawcord
- Tapered leg
- Merino lined side seam hand pockets

**Fabric Main:** 200gm<sup>2</sup> Unbrushed Terry Corespun, 88% Merino Wool, 9% Nylon, 3% LYCRA®

**Fabric cuffs:** 98% Merino Wool, 2% LYCRA®

**Fiber micron:** Merino Wool 18.9 micron

**Fit:** Regular

**Sizes:** XS-XL

**Ships:** 31-January-2022



IB102196010  
BLACK



IB102196004  
GRITSTONE HTHR



IB102196342  
GRAPE  
NEW



# Base Layer.

Sitting softly next to your skin, natural base layers move and breathe in harmony with your body for comfort all day long.

## 150 Zone SS Crewe



Lightweight highly breathable base layer that's perfect for adventure and everyday training, with strategically zoned panels of merino mesh for active ventilation.

- BodyFitZone™ - features breathable zones for high intensity activity
- Raglan sleeve construction for mobility
- Gusseted underarms for mobility and comfort
- Flatlock seams to prevent friction
- Drop tail hem for added coverage

**Fabric Main:** 150gm<sup>2</sup> Jersey Corespun, 83% Merino Wool, 12% Nylon, 5% LYCRA®

**Fabric Mesh:** 120gm<sup>2</sup> Eyelet Corespun, 84% Merino Wool, 15% Nylon, 1% LYCRA®

**Fiber micron:** Merino Wool 18.9 micron

**Fit:** Slim

**Sizes:** S-XXL

**Ships:** 31-January-2022



IB104346001  
BLACK



IB104346351  
AZUL  
NEW

## 150 Zone LS Crewe



Lightweight highly breathable base layer that's perfect for adventure and everyday training, with strategically zoned panels of merino mesh for active ventilation.

- BodyFitZone™ - features breathable zones for high intensity activity
- Thumb loops keep your sleeves in place and hands warm
- Raglan sleeve construction for mobility
- Gusseted underarms for mobility and comfort
- Flatlock seams to prevent friction
- Drop tail hem for added coverage

**Fabric Main:** 150gm<sup>2</sup> Jersey Corespun, 83% Merino Wool, 12% Nylon, 5% LYCRA®

**Fabric Mesh:** 120gm<sup>2</sup> Eyelet Corespun, 84% Merino Wool, 15% Nylon, 1% LYCRA®

**Fiber micron:** Merino Wool 18.9 micron

**Fit:** Slim

**Sizes:** S-XXL

**Ships:** 31-January-2022



IB104347001  
BLACK



IB104347351  
AZUL  
NEW

## 150 Zone LS Half Zip



Lightweight highly breathable base layer that's perfect for adventure and everyday training, with strategically zoned panels of merino mesh for active ventilation.

- BodyFitZone™ - features breathable zones for high intensity activity
- Thumb loops keep your sleeves in place and hands warm
- Raglan sleeve construction for mobility
- Gusseted underarms for mobility and comfort
- Flatlock seams to prevent friction
- Drop tail hem for added coverage

**Fabric Main:** 150gm<sup>2</sup> Jersey Corespun, 83% Merino Wool, 12% Nylon, 5% LYCRA®

**Fabric Mesh:** 120gm<sup>2</sup> Eyelet Corespun, 84% Merino Wool, 15% Nylon, 1% LYCRA®

**Fiber micron:** Merino Wool 18.9 micron

**Fit:** Slim

**Sizes:** S-XXL

**Ships:** 31-January-2022



IB104348001  
BLACK



IB104348362  
AZUL  
NEW

## 150 Zone Leggings



Lightweight highly breathable base layer that's perfect for adventure and everyday training, with strategically zoned panels of merino mesh for active ventilation.

- BodyFitZone™ - features breathable zones for high intensity activity
- Gusset for mobility and comfort
- Flatlock seams to prevent friction

**Fabric Main:** 150gm<sup>2</sup> Jersey Corespun, 83% Merino Wool, 12% Nylon, 5% LYCRA®

**Fabric Mesh:** 120gm<sup>2</sup> Eyelet Corespun, 84% Merino Wool, 15% Nylon, 1% LYCRA®

**Fiber micron:** Merino Wool 18.9 micron

**Fit:** Slim

**Sizes:** S-XXL

**Ships:** 31-January-2022



IB104350001  
BLACK





### 200 Oasis SS Crewe



The 200 Oasis base layer range is the benchmark against which all others are judged. The SS crewe is made with icebreaker's most versatile merino jersey fabric for year-round layering performance whatever the activity.

- 100% Merino - Soft merino fibers that regulates body temperature in all weather conditions and resists odors
- Gusseted underarms for mobility and comfort
- Offset shoulder seams to prevent friction
- Flatlock seams to prevent friction
- Drop tail hem for added coverage

**Fabric Main:** 200gm<sup>2</sup> Jersey, 100% Merino Wool

**Fiber micron:** Merino Wool 18.9 micron

**Fit:** Slim

**Sizes:** S-XXL

**Ships:** 31-January-2022



IB104509001  
BLACK



IB104509013  
GRITSTONE HTHR



IB104509344  
HAZE  
NEW



IB104509342  
GRAPE  
NEW



### 200 Oasis LS Crewe



The 200 Oasis base layer range is the benchmark against which all others are judged. The long sleeve crewe is made with icebreaker's most versatile merino jersey fabric for year-round layering performance whatever the activity.

- 100% Merino - Soft merino fibers that regulates body temperature in all weather conditions and resists odors
- Gusseted underarms for mobility and comfort
- Offset shoulder seams to prevent friction
- Flatlock seams to prevent friction
- Drop tail hem for added coverage

**Fabric Main:** 200gm<sup>2</sup> Jersey, 100% Merino Wool

**Fiber micron:** Merino Wool 18.9 micron

**Fit:** Slim

**Sizes:** S-XXL

**Ships:** 31-January-2022



IB104365001  
BLACK



IB104365013  
GRITSTONE HTHR



IB104365342  
MIDNIGHT NAVY



IB104365344  
HAZE  
NEW



IB104365342  
GRAPE  
NEW



### 200 Oasis LS Half Zip



The 200 Oasis base layer range is the benchmark against which all others are judged. The LS Half Zip is made with icebreaker's most versatile merino jersey fabric for year-round layering performance whatever the activity.

- 100% Merino - Soft merino fibers that regulates body temperature in all weather conditions and resists odors
- Gusseted underarms for mobility and comfort
- Offset shoulder seams to prevent friction
- Flatlock seams to prevent friction
- Drop tail hem for added coverage

**Fabric Main:** 200gm<sup>2</sup> Jersey, 100% Merino Wool

**Fiber micron:** Merino Wool 18.9 micron

**Fit:** Slim

**Sizes:** S-XXL

**Ships:** 31-January-2022



IB104367001  
BLACK



### 200 Oasis Shorts



The 200 Oasis base layer range is the benchmark against which all others are judged. The Oasis shorts are made with Icebreaker's most versatile merino jersey fabric for year-round layering performance whatever the activity.

- 100% Merino - Soft merino fibers that regulates body temperature in all weather conditions and resists odors
- Gusset for mobility and comfort
- Flatlock seams to prevent friction

**Fabric Main:** 200gm<sup>2</sup> Jersey, 100% Merino Wool

**Fiber micron:** Merino Wool 18.9 micron

**Fit:** Slim

**Sizes:** S-XXL

**Ships:** 31-January-2022



### 200 Oasis Leggings wFly



The 200 Oasis base layer range is the benchmark against which all others are judged. The leggings are made with Icebreaker's most versatile merino jersey fabric for year-round layering performance whatever the activity.

- 100% Merino - Soft merino fibers that regulates body temperature in all weather conditions and resists odors
- Contoured pouch with functioning fly
- Gusset for mobility and comfort
- Flatlock seams to prevent friction

**Fabric Main:** 200gm<sup>2</sup> Jersey, 100% Merino Wool

**Fiber micron:** Merino Wool 18.9 micron

**Fit:** Slim

**Sizes:** S-XXL

**Ships:** 31-January-2022



IB0A59KY001  
BLACK



IB104370001  
BLACK



### 200 Oasis Leggings



The 200 Oasis base layer range is the benchmark against which all others are judged. The leggings are made with Icebreaker's most versatile merino jersey fabric for year-round layering performance whatever the activity.

- 100% Merino - Soft merino fibers that regulates body temperature in all weather conditions and resists odors
- Gusset for mobility and comfort
- Flatlock seams to prevent friction

**Fabric Main:** 200gm<sup>2</sup> Jersey, 100% Merino Wool

**Fiber micron:** Merino Wool 18.9 micron

**Fit:** Slim

**Sizes:** S-XXL

**Ships:** 31-January-2022



IB104369001  
BLACK



### 260 Tech LS Crewe



The 260 Tech LS crewe is an incredibly warm merino base layer designed for the coldest months of the year. It is ideal for skiing, snowshoeing and other winter pursuits, making it the go-to piece for winter layering.

- 100% Merino - Soft merino fibers that regulates body temperature in all weather conditions and resists odors
- Gusseted underarms for mobility and comfort
- Offset shoulder seams to prevent friction
- Flatlock seams to prevent friction
- Backward set side seams to prevent friction

**Fabric Main:** 260gm<sup>2</sup> Jersey, 100% Merino Wool

**Fiber micron:** Merino Wool 18.9 micron

**Fit:** Slim

**Sizes:** S-XXL

**Ships:** 31-January-2022



IB104371001  
BLACK



### 260 Tech LS Half Zip



The 260 Tech LS Half Zip is an incredibly warm merino base layer designed for the coldest months of the year. It is ideal for skiing, snowshoeing and other winter pursuits, making it the go-to piece for winter layering.

- 100% Merino - Soft merino fibers that regulates body temperature in all weather conditions and resists odors
- Gusseted underarms for mobility and comfort
- Offset shoulder seams to prevent friction
- Flatlock seams to prevent friction
- Backward set side seams to prevent friction

**Fabric Main:** 260gm<sup>2</sup> Jersey, 100% Merino Wool

**Fiber micron:** Merino Wool 18.9 micron

**Fit:** Slim

**Sizes:** S-XXL

**Ships:** 31-January-2022



IB104372001  
BLACK HTHR



### 260 Tech Leggings



The 260 Tech leggings are an incredibly warm merino base layer designed for the coldest months of the year. They are ideal for skiing, snowshoeing and other winter pursuits, making it the go-to piece for winter layering.

- 100% Merino - Soft merino fibers that regulates body temperature in all weather conditions and resists odors
- Gusset for mobility and comfort
- Flatlock seams to prevent friction

**Fabric Main:** 260gm<sup>2</sup> Jersey, 100% Merino Wool

**Fiber micron:** Merino Wool 18.9 micron

**Fit:** Slim

**Sizes:** S-XXL

**Ships:** 31-January-2022



IB104373001  
BLACK



### 260 Tech Leggings wFly



The 260 Tech leggings are an incredibly warm merino base layer designed for the coldest months of the year. They are ideal for skiing, snowshoeing and other winter pursuits, making it the go-to piece for winter layering.

- 100% Merino - Soft merino fibers that regulates body temperature in all weather conditions and resists odors
- Gusset for mobility and comfort
- Contoured pouch with functioning fly
- Flatlock seams to prevent friction

**Fabric Main:** 260gm<sup>2</sup> Jersey, 100% Merino Wool

**Fiber micron:** Merino Wool 18.9 micron

**Fit:** Slim

**Sizes:** S-XXL

**Ships:** 31-January-2022



IB104374001  
BLACK



### 175 Everyday SS Crewe



A classic, all-purpose base layer made with soft and breathable 100% merino wool rib knit fabric.

- 100% Merino - Soft merino fibers that regulates body temperature in all weather conditions and resists odors
- Rib fabric provides stretch and comfort

**Fabric Main:** 175gm<sup>2</sup> Rib, 100% Merino Wool

**Fiber micron:** Merino Wool 18.9 micron

**Fit:** Slim

**Sizes:** S-XXL

**Ships:** 31-January-2022



IB104482001  
BLACK



### 175 Everyday LS Crewe



A classic, all-purpose base layer made with soft and breathable 100% merino wool rib knit fabric.

- 100% Merino - Soft merino fibers that regulates body temperature in all weather conditions and resists odors
- Rib fabric provides stretch and comfort

**Fabric Main:** 175gm<sup>2</sup> Rib, 100% Merino Wool

**Fiber micron:** Merino Wool 18.9 micron

**Fit:** Slim

**Sizes:** S-XXL

**Ships:** 31-January-2022



IB104483001  
BLACK



### 175 Everyday Boxers wFly



Classic underwear made with soft and breathable 100% merino wool rib knit fabric.

- 100% Merino - Soft merino fibers that regulates body temperature in all weather conditions and resists odors
- Rib fabric provides stretch and comfort
- Gusset for mobility and comfort
- Contoured pouch with functioning fly

**Fabric Main:** 175gm<sup>2</sup> Rib, 100% Merino Wool

**Fiber micron:** Merino Wool 18.9 micron

**Fit:** Slim

**Sizes:** S-XXL

**Ships:** 31-January-2022



IB104485001  
BLACK



### 175 Everyday Leggings



A classic, all-purpose base layer made with soft and breathable 100% merino wool rib knit fabric.

- 100% Merino - Soft merino fibers that regulates body temperature in all weather conditions and resists odors
- Rib fabric provides stretch and comfort

**Fabric Main:** 175gm<sup>2</sup> Rib, 100% Merino Wool

**Fiber micron:** Merino Wool 18.9 micron

**Fit:** Slim

**Sizes:** S-XXL

**Ships:** 31-January-2022



IB104487001  
BLACK



### 175 Everyday Leggings wFly



A classic, all-purpose base layer made with soft and breathable 100% merino wool rib knit fabric.

- 100% Merino - Soft merino fibers that regulates body temperature in all weather conditions and resists odors
- Rib fabric provides stretch and comfort
- Contoured pouch with functioning fly

**Fabric Main:** 175gm<sup>2</sup> Rib, 100% Merino Wool

**Fiber micron:** Merino Wool 18.9 micron

**Fit:** Slim

**Sizes:** S-XXL

**Ships:** 31-January-2022



IB104510001  
BLACK



# Underwear.

Natural intimates feel soft and luxurious next to your skin, for all-day comfort that moves and breathes with your body.

### Anatomica Cool-Lite™ Trunks



Stretchy, slim fit and made with our Cool-Lite™ fabric, the Anatomica Cool-Lite™ Trunks offer the support and comfort you need.

- Cool-Lite™ - A lightweight and breathable fabric blend that is designed to wick moisture away from the body
- Gusset for mobility and comfort
- Contoured pouch for comfort
- Flatlock seams to prevent friction

**Fabric Main:** 155gm² Cool-Lite™ Jersey Coespun, 50% Merino Wool, 33% TENCEL™, 12% Nylon, 5% LYCRA®

**Fiber micron:** Merino Wool 18.9 micron

**Fit:** Slim

**Sizes:** S-XXL

**Ships:** 31-January-2022



IB105223001  
BLACK



IB105223351  
AZUL  
NEW



IB105223014  
FOSSIL  
NEW

### Anatomica Cool-Lite™ Boxers



Stretchy and slim-fit merino wool men's boxers made with our Cool-Lite™ fabric offering the support and comfort you need.

- Cool-Lite™ - A lightweight and breathable fabric blend that is designed to wick moisture away from the body
- Gusset for mobility and comfort
- Contoured pouch for comfort
- Flatlock seams to prevent friction

**Fabric Main:** 155gm² Cool-Lite™ Jersey Coespun, 50% Merino Wool, 33% TENCEL™, 12% Nylon, 5% LYCRA®

**Fiber micron:** Merino Wool 18.9 micron

**Fit:** Slim

**Sizes:** S-XXL

**Ships:** 31-January-2022



IB105246001  
BLACK



IB105246352  
LAVA  
NEW



IB105246351  
AZUL  
NEW



IB105246426  
NIGHTFALL  
NEW



### Anatomica Briefs



Slim-fit merino wool briefs made with our coespun fabric, the Anatomica Briefs offer the support and comfort you need in a classic underwear design.

- Merino Coespun - durable merino blend regulates body temperature in all weather conditions
- Contoured pouch for comfort
- Flatlock seams to prevent friction

**Fabric Main:** 150gm² Jersey Coespun, 83% Merino Wool, 12% Nylon, 5% LYCRA®

**Fiber micron:** Merino Wool 18.9 micron

**Fit:** Slim

**Sizes:** S-XXL

**Ships:** 31-January-2022



IB103031001  
BLACK



IB103031002  
JET HTHR



IB103031069  
LODEN



IB103031342  
GRAPE  
NEW

### Anatomica Boxers



Stretchy and slim-fit merino wool men's boxers made with our coespun fabric, the Anatomica Boxers offer the support and comfort you need.

- Merino Coespun - durable merino blend regulates body temperature in all weather conditions
- Contoured pouch for comfort
- Flatlock seams to prevent friction

**Fabric Main:** 150gm² Jersey Coespun, 83% Merino Wool, 12% Nylon, 5% LYCRA®

**Fiber micron:** Merino Wool 18.9 micron

**Fit:** Slim

**Sizes:** S-XXL

**Ships:** 31-January-2022



IB103029010  
BLACK



IB103029038  
GRITSTONE HTHR/  
BLACK/S



IB103029423  
MIDNIGHT NAVY



IB103029011  
JET HTHR



IB103029069  
LODEN



IB103029342  
GRAPE  
NEW



IB103029344  
HAZE  
NEW



IB103029390  
ELECTRIC/PRALINE/S  
NEW

### Anatomica Long Boxers



Slim-fit merino wool boxers made with our corespun fabric in a slightly longer length, the Anatomica Long Boxers offer the support and comfort you need.

- Merino Corespun - durable merino blend regulates body temperature in all weather conditions
- Contoured pouch for comfort
- Flatlock seams to prevent friction

**Fabric Main:** 150gm<sup>2</sup> Jersey Corespun, 83% Merino Wool, 12% Nylon, 5% LYCRA®

**Fiber micron:** Merino Wool 18.9 micron

**Fit:** Slim

**Sizes:** S-XXL

**Ships:** 31-January-2022



IB103055010  
BLACK



IB103055069  
LODEN  
NEW



IB103055342  
GRAPE  
NEW

### Anatomica Tank



A slim-fit merino wool men's tank top made with our corespun fabric, the Anatomica Tank offers breathability and comfort in a sleeveless tank top design.

- Merino Corespun - durable merino blend regulates body temperature in all weather conditions

**Fabric Main:** 150gm<sup>2</sup> Jersey Corespun, 83% Merino Wool, 12% Nylon, 5% LYCRA®

**Fiber micron:** Merino Wool 18.9 micron

**Fit:** Slim

**Sizes:** S-XXL

**Ships:** 31-January-2022



IB103034001  
BLACK



IB103034104  
SNOW

### Anatomica SS Crewe



A slim-fit merino wool short sleeve shirt made with our corespun fabric, the Anatomica Short Sleeve Crewe offers lightweight breathability and comfort for a variety of active pursuits.

- Merino Corespun - durable merino blend regulates body temperature in all weather conditions

**Fabric Main:** 150gm<sup>2</sup> Jersey Corespun, 83% Merino Wool, 12% Nylon, 5% LYCRA®

**Fiber micron:** Merino Wool 18.9 micron

**Fit:** Slim

**Sizes:** S-XXL

**Ships:** 31-January-2022



IB103033001  
BLACK



IB103033002  
JET HTHR



IB103033423  
MIDNIGHT NAVY



IB103033104  
SNOW



IB103033342  
GRAPE  
NEW

### Anatomica SS V



A slim-fit merino wool short sleeve shirt made with our corespun fabric, the Anatomica Short Sleeve V offers lightweight breathability and comfort for a variety of active pursuits with a V-neck design.

- Merino Corespun - durable merino blend regulates body temperature in all weather conditions

**Fabric Main:** 150gm<sup>2</sup> Jersey Corespun, 83% Merino Wool, 12% Nylon, 5% LYCRA®

**Fiber micron:** Merino Wool 18.9 micron

**Fit:** Slim

**Sizes:** S-XXL

**Ships:** 31-January-2022



IB103661001  
BLACK



IB103661104  
SNOW





# First Layer.

Natural softness against your skin, for breathable comfort and climate control. Versatility, style, function and performance without compromise.

### ZoneKnit™ Tank

NEW STYLE



Our most breathable and lightweight tank for high exertion activities incorporating ZoneKnit™ technology.

- ZoneKnit™ - Body mapping technology designed to actively regulate body temperature and let skin breathe during high-intensity activity
- Cool-Lite™ - A lightweight and breathable fabric blend that is designed to wick moisture away from the body
- Eyelet mesh back for ventilation
- Offset shoulder seams to prevent friction

**Fabric Main:** 150gm<sup>2</sup> Cool-Lite™ Jersey, 60% TENCEL™, 40% Merino Wool

**Fabric Mesh:** 150gm<sup>2</sup> Cool-Lite™ Eyelet, 58% TENCEL™, 42% Merino Wool

**Fiber micron:** Merino Wool 18.9 micron

**Fit:** Regular

**Sizes:** S-XXL

**Ships:** 31-January-2022



IB0A59LB001  
BLACK  
NEW



IB0A59LB385  
AZUL/HAZE/CB  
NEW

### ZoneKnit™ SS Tee

Our most breathable and lightweight tee for high exertion activities incorporating ZoneKnit™ technology.

- ZoneKnit™ - Body mapping technology designed to actively regulate body temperature and let skin breathe during high-intensity activity
- Cool-Lite™ - A lightweight and breathable fabric blend that is designed to wick moisture away from the body
- Eyelet mesh back and sleeves for ventilation
- Offset shoulder seams to prevent friction

**Fabric Main:** 130gm<sup>2</sup> Cool-Lite™ Jersey Corespun, 52% Merino Wool, 35% TENCEL™, 13% Nylon

**Fabric Mesh:** 135gm<sup>2</sup> Cool-Lite™ Eyelet, 51% Merino Wool, 35% TENCEL™, 14% Nylon

**Fiber micron:** Merino Wool 18.9 micron

**Fit:** Regular

**Sizes:** S-XXL

**Ships:** 31-January-2022



IB0A59LK001  
BLACK



IB0A59LK385  
AZUL/HAZE/CB  
NEW



IB0A59LK386  
LAVA/GRAPE/CB  
NEW

### Sphere II SS Tee

UPDATED STYLE



A soft and comfortable men's short sleeve tee made with our Cool-Lite™ merino wool lightweight jersey.

- Cool-Lite™ - A lightweight and breathable fabric blend that is designed to wick moisture away from the body
- Side splits at hem for added ventilation and mobility
- Offset shoulder seams to prevent friction
- Drop tail hem for added coverage

**Fabric Main:** 150gm<sup>2</sup> Cool-Lite™ Jersey, 60% TENCEL™, 40% Merino Wool

**Fiber micron:** Merino Wool 18.9 micron

**Fit:** Regular

**Sizes:** S-XXL

**Ships:** 31-January-2022



IB0A56C6351  
AZUL  
NEW



IB0A56C6001  
BLACK  
NEW



IB0A56C6352  
LAVA  
NEW



IB0A56C6016  
METRO HTHR  
NEW



IB0A56C6221  
COYOTE HTHR  
NEW



IB0A56C6440  
MIDNIGHT  
NAVY HTHR  
NEW

### Sphere II LS Tee

UPDATED STYLE



A soft and comfortable men's long sleeve tee made with our Cool-Lite™ merino wool lightweight jersey.

- Cool-Lite™ - A lightweight and breathable fabric blend that is designed to wick moisture away from the body
- Side splits at hem for added ventilation and mobility
- Offset shoulder seams to prevent friction
- Drop tail hem for added coverage

**Fabric Main:** 150gm<sup>2</sup> Cool-Lite™ Jersey, 60% TENCEL™, 40% Merino Wool

**Fiber micron:** Merino Wool 18.9 micron

**Fit:** Regular

**Sizes:** S-XXL

**Ships:** 31-January-2022



IB0A56D8351  
AZUL  
NEW



IB0A56D8001  
BLACK  
NEW



IB0A56D8016  
METRO HTHR  
NEW



100% PURE MERINO



### Granary SS Pocket Tee

NEW STYLE

A classic relaxed fit short sleeve pocket tee in merino wool offering everyday comfort and style.

- 100% Merino - Soft merino fibers that regulate body temperature in all weather conditions and resists odors
- Rib neck
- Chest pocket

**Fabric Main:** 150gm<sup>2</sup> Jersey, 100% Merino Wool

**Fiber micron:** Merino Wool 18.9 micron

**Fit:** Relaxed

**Sizes:** S-XXL

**Ships:** 31-January-2022



IB0A56CK001  
BLACK  
NEW



IB0A56CK069  
LODEN  
NEW



IB0A56CK016  
METRO HTHR  
NEW



100% PURE MERINO



### Granary LS Pocket Tee

UPDATED STYLE

A classic relaxed fit long sleeve pocket tee in merino wool offering everyday comfort and style.

- 100% Merino - Soft merino fibers that regulate body temperature in all weather conditions and resists odors
- Rib neck
- Chest pocket

**Fabric Main:** 150gm<sup>2</sup> Jersey, 100% Merino Wool

**Fiber micron:** Merino Wool 18.9 micron

**Fit:** Relaxed

**Sizes:** S-XXL

**Ships:** 31-January-2022



IB0A56CH001  
BLACK  
NEW



IB0A56CH016  
METRO HTHR  
NEW



100% PURE MERINO



### Granary SS Pocket Tee Stripe

NEW STYLE

A classic relaxed fit short sleeve pocket tee in merino wool offering everyday comfort and style.

- 100% Merino - Soft merino fibers that regulate body temperature in all weather conditions and resists odors
- Rib neck
- Chest pocket

**Fabric Main:** 150gm<sup>2</sup> Jersey, 100% Merino Wool

**Fiber micron:** Merino Wool 18.9 micron

**Fit:** Relaxed

**Sizes:** S-XXL

**Ships:** 31-January-2022



IB0A56CC329  
MIDNIGHT NAVY/  
SNOW/S  
NEW



IB0A56CC472  
SAND/ECRU HTHR/S  
NEW



100% PURE MERINO



### Granary LS Tee Stripe

NEW STYLE

A classic relaxed fit long sleeve tee in merino wool offering everyday comfort and style.

- 100% Merino - Soft merino fibers that regulate body temperature in all weather conditions and resists odors
- Rib neck

**Fabric Main:** 150gm<sup>2</sup> Jersey, 100% Merino Wool

**Fiber micron:** Merino Wool 18.9 micron

**Fit:** Relaxed

**Sizes:** S-XXL

**Ships:** 31-January-2022



IB0A56CB329  
MIDNIGHT NAVY/  
SNOW/S  
NEW



IB0A56CB472  
SAND/ECRU HTHR/S  
NEW

### Wave SS Tee Stripe

NEW STYLE



A classic lightweight short sleeve striped crew neck jersey tee that's perfect for warm weather and made from our Cool-Lite™ blend of merino wool and TENCEL™.

- Cool-Lite™ - A lightweight and breathable fabric blend that is designed to wick moisture away from the body
- Offset shoulder seams

**Fabric Main:** 150gm<sup>2</sup> Cool-Lite™ Jersey, 60% TENCEL™, 40% Merino Wool

**Fiber micron:** Merino Wool 18.9 micron

**Fit:** Regular

**Sizes:** S-XXL

**Ships:** 11–April–2022



IB0A56CJ474  
AZUL/HAZE/S  
NEW



IB0A56CJ469  
METRO HTHR/  
LODEN/S  
NEW



IB0A56CJ353  
MIDNIGHT NAVY/  
GRAPE/S  
NEW



### Wave LS Tee Stripe

NEW STYLE

A classic lightweight long sleeve striped crew neck jersey tee that's perfect for warm weather and made from our Cool-Lite™ blend of merino wool and TENCEL™.

- Cool-Lite™ - A lightweight and breathable fabric blend that is designed to wick moisture away from the body
- Offset shoulder seams

**Fabric Main:** 150gm<sup>2</sup> Cool-Lite™ Jersey, 60% TENCEL™, 40% Merino Wool

**Fiber micron:** Merino Wool 18.9 micron

**Fit:** Regular

**Sizes:** S-XXL

**Ships:** 11–April–2022



IB0A56D2353  
MIDNIGHT NAVY/  
GRAPE/S  
NEW



IB0A56D2474  
AZUL/HAZE/S  
NEW

### Tech Lite II SS Tee



Our versatile merino wool Tech Lite II Short Sleeve Tee provides comfort, breathability and odor-resistance for just about any adventure you can think of.

- 100% Merino - Soft merino fibers that regulate body temperature in all weather conditions and resists odors
- Offset shoulder seams to prevent friction

**Fabric Main:** 150gm<sup>2</sup> Jersey, 100% Merino Wool

**Fiber micron:** Merino Wool 18.9 micron

**Fit:** Regular

**Sizes:** S-XXL

**Ships:** 31–January–2022



IB0A59IY001  
BLACK



IB0A59IY004  
GRITSTONE HTHR



IB0A59IY069  
LODEN



IB0A59IY401  
MIDNIGHT NAVY  
NEW



IB0A59IY342  
GRAPE  
NEW



IB0A59IY344  
HAZE  
NEW



### Tech Lite II SS Tee Grown Down South

NEW STYLE

Our versatile merino wool Tech Lite II Short Sleeve Tee provides comfort, breathability and odor-resistance for just about any adventure you can think of. This tech tee features a fun and quirky sheep illustration.

- 100% Merino - Soft merino fibers that regulate body temperature in all weather conditions and resists odors
- Offset shoulder seams to prevent friction

**Fabric Main:** 150gm<sup>2</sup> Jersey, 100% Merino Wool

**Fiber micron:** Merino Wool 18.9 micron

**Fit:** Regular

**Sizes:** S-XXL

**Ships:** 31–January–2022



IB0A56CW401  
MIDNIGHT NAVY  
NEW



IB0A56CW342  
GRAPE  
NEW



### Tech Lite II SS Tee Trailhead

NEW STYLE

Our versatile merino wool Tech Lite II Short Sleeve Tee provides comfort, breathability and odor-resistance for just about any adventure you can think of. This tech tee features a retro inspired print of a moon lit trail in Queenstown, New Zealand.

- 100% Merino - Soft merino fibers that regulate body temperature in all weather conditions and resists odors
- Offset shoulder seams to prevent friction

**Fabric Main:** 150gm<sup>2</sup> Jersey, 100% Merino Wool

**Fiber micron:** Merino Wool 18.9 micron

**Fit:** Regular

**Sizes:** S-XXL

**Ships:** 31-January-2022



IB0A56CN016  
METRO HTHR  
NEW



IB0A56CN342  
GRAPE  
NEW



IB0A56CN069  
LODEN  
NEW



### Tech Lite II SS Tee Sheep Dog

NEW STYLE

Our versatile merino wool Tech Lite II Short Sleeve Tee provides comfort, breathability and odor-resistance for just about any adventure you can think of. This tech tee features a heritage style illustration of a jumping farm dog, herding sheep.

- 100% Merino - Soft merino fibers that regulate body temperature in all weather conditions and resists odors
- Offset shoulder seams to prevent friction

**Fabric Main:** 150gm<sup>2</sup> Jersey, 100% Merino Wool

**Fiber micron:** Merino Wool 18.9 micron

**Fit:** Regular

**Sizes:** S-XXL

**Ships:** 31-January-2022



IB0A56CT001  
BLACK  
NEW



IB0A56CT351  
AZUL  
NEW



IB0A59CT069  
LODEN  
NEW



### Tech Lite II SS Tee Sheperds Cycle Club

NEW STYLE

Our versatile merino wool Tech Lite II Short Sleeve Tee provides comfort, breathability and odor-resistance for just about any adventure you can think of. This tech tee features a fun illustration of a sheep cycling.

- 100% Merino - Soft merino fibers that regulate body temperature in all weather conditions and resists odors
- Offset shoulder seams to prevent friction

**Fabric Main:** 150gm<sup>2</sup> Jersey, 100% Merino Wool

**Fiber micron:** Merino Wool 18.9 micron

**Fit:** Regular

**Sizes:** S-XXL

**Ships:** 31-January-2022



IB0A56CU001  
BLACK  
NEW



IB0A56CU352  
LAVA  
NEW



### Tech Lite II SS Tee South Alp

NEW STYLE

Our versatile merino wool Tech Lite II Short Sleeve Tee provides comfort, breathability and odor-resistance for just about any adventure you can think of. This tech tee features a screen print of a snowy southern mountain peak of Aoraki / Mount Cook.

- 100% Merino - Soft merino fibers that regulate body temperature in all weather conditions and resists odors
- Offset shoulder seams to prevent friction

**Fabric Main:** 150gm<sup>2</sup> Jersey, 100% Merino Wool

**Fiber micron:** Merino Wool 18.9 micron

**Fit:** Regular

**Sizes:** S-XXL

**Ships:** 31-January-2022



IB0A56CV001  
BLACK  
NEW



IB0A56CV351  
AZUL  
NEW



### Tech Lite II SS Tee Move to Natural

NEW STYLE

Our versatile merino wool Tech Lite II Short Sleeve Tee provides comfort, breathability and odor-resistance for just about any adventure you can think of. This tech tee features a fun illustration of 'Move to Natural' with sun and moon icons.

- 100% Merino - Soft merino fibers that regulate body temperature in all weather conditions and resists odors
- Offset shoulder seams to prevent friction

**Fabric Main:** 150gm<sup>2</sup> Jersey, 100% Merino Wool

**Fiber micron:** Merino Wool 18.9 micron

**Fit:** Regular

**Sizes:** S-XXL

**Ships:** 31-January-2022



IB0A56D1016  
METRO HTHR  
NEW



### Tech Lite II SS Tee Canopy Camper

NEW STYLE

Our versatile merino wool Tech Lite II Short Sleeve Tee provides comfort, breathability and odor-resistance for just about any adventure you can think of. This tech tee features a camping illustration of the great outdoors with the message 'Move to Natural'.

- 100% Merino - Soft merino fibers that regulate body temperature in all weather conditions and resists odors
- Offset shoulder seams to prevent friction

**Fabric Main:** 150gm<sup>2</sup> Jersey, 100% Merino Wool

**Fiber micron:** Merino Wool 18.9 micron

**Fit:** Regular

**Sizes:** S-XXL

**Ships:** 31-January-2022



IB0A56C0001  
BLACK  
NEW



IB0A56C0352  
LAVA  
NEW



IB0A56C0401  
MIDNIGHT NAVY  
NEW



### Tech Lite II SS Tee Natural Run Club

NEW STYLE

Our versatile merino wool Tech Lite II Short Sleeve Tee provides comfort, breathability and odor-resistance for just about any adventure you can think of. This tech tee is for all the runners who love to move naturally.

- 100% Merino - Soft merino fibers that regulate body temperature in all weather conditions and resists odors
- Offset shoulder seams to prevent friction

**Fabric Main:** 150gm<sup>2</sup> Jersey, 100% Merino Wool

**Fiber micron:** Merino Wool 18.9 micron

**Fit:** Regular

**Sizes:** S-XXL

**Ships:** 31-January-2022



IB0A56CP344  
HAZE  
NEW



IB0A56CP016  
METRO HTHR  
NEW



### Tech Lite II SS Tee Forest Wall

NEW STYLE

Our versatile merino wool Tech Lite II Short Sleeve Tee provides comfort, breathability and odor-resistance for just about any adventure you can think of. This tech tee features a graphic by artist Antra Švarcs - an illustration of a hiker trekking in a summer mountain scene.

- 100% Merino - Soft merino fibers that regulate body temperature in all weather conditions and resists odors
- Offset shoulder seams to prevent friction

**Fabric Main:** 150gm<sup>2</sup> Jersey, 100% Merino Wool

**Fiber micron:** Merino Wool 18.9 micron

**Fit:** Regular

**Sizes:** S-XXL

**Ships:** 11-April-2022



IB0A56CQ001  
BLACK  
NEW



IB0A56CQ351  
AZUL  
NEW



### Tech Lite II SS Tee Nature Touring Club

NEW STYLE

Our versatile merino wool Tech Lite II Short Sleeve Tee provides comfort, breathability and odor-resistance for just about any adventure you can think of. This tech tee features a topographic illustration of a remote location.

- 100% Merino - Soft merino fibers that regulate body temperature in all weather conditions and resists odors
- Offset shoulder seams to prevent friction

**Fabric Main:** 150gm<sup>2</sup> Jersey, 100% Merino Wool

**Fiber micron:** Merino Wool 18.9 micron

**Fit:** Regular

**Sizes:** S-XXL

**Ships:** 31-January-2022



IB0A56CR001  
BLACK  
NEW

IB0A56CR342  
GRAPE  
NEW



### Tech Lite II SS Tee Mountain Mantra

NEW STYLE

Our versatile merino wool Tech Lite II Short Sleeve Tee provides comfort, breathability and odor-resistance for just about any adventure you can think of. This tech tee features a print of Tasman Lake, New Zealand, in washed out summer seasonal colors.

- 100% Merino - Soft merino fibers that regulate body temperature in all weather conditions and resists odors
- Offset shoulder seams to prevent friction

**Fabric Main:** 150gm<sup>2</sup> Jersey, 100% Merino Wool

**Fiber micron:** Merino Wool 18.9 micron

**Fit:** Regular

**Sizes:** S-XXL

**Ships:** 31-January-2022



IB0A56CS001  
BLACK  
NEW

IB0A56CS344  
HAZE  
NEW



### Tech Lite II SS Tee Sunrise Ridge

NEW STYLE

Our versatile merino wool Tech Lite II Short Sleeve Tee provides comfort, breathability and odor-resistance for just about any adventure you can think of. This tech tee features a graphic by artist Mark Conlan.

- 100% Merino - Soft merino fibers that regulate body temperature in all weather conditions and resists odors
- Offset shoulder seams to prevent friction

**Fabric Main:** 150gm<sup>2</sup> Jersey, 100% Merino Wool

**Fiber micron:** Merino Wool 18.9 micron

**Fit:** Regular

**Sizes:** S-XXL

**Ships:** 31-January-2022



IB0A56CX001  
BLACK  
NEW

IB0A56CX069  
LODDE  
NEW



### Tech Lite II SS Tee Paddle Lines

NEW STYLE

Our versatile merino wool Tech Lite II Short Sleeve Tee provides comfort, breathability and odor-resistance for just about any adventure you can think of. This tech tee features a canoeing illustration by artist Mark Conlan.

- 100% Merino - Soft merino fibers that regulate body temperature in all weather conditions and resists odors
- Offset shoulder seams to prevent friction

**Fabric Main:** 150gm<sup>2</sup> Jersey, 100% Merino Wool

**Fiber micron:** Merino Wool 18.9 micron

**Fit:** Regular

**Sizes:** S-XXL

**Ships:** 11-April-2022



IB0A56CY004  
GRITSTONE HTHR  
NEW

IB0A56CY401  
MIDNIGHT NAVY  
NEW



### Tech Lite II SS Tee Herd Path

NEW STYLE

Our versatile merino wool Tech Lite II Short Sleeve Tee provides comfort, breathability and odor-resistance for just about any adventure you can think of. This tech tee features a graphic by artist Mark Conlan.

- 100% Merino - Soft merino fibers that regulate body temperature in all weather conditions and resists odors
- Offset shoulder seams to prevent friction

**Fabric Main:** 150gm<sup>2</sup> Jersey, 100% Merino Wool

**Fiber micron:** Merino Wool 18.9 micron

**Fit:** Regular

**Sizes:** S-XXL

**Ships:** 11-April-2022



IB0A56CZ001  
BLACK  
NEW



IB0A56CZ344  
HAZE  
NEW



### Men Tech Lite II SS Tee Single Line Camp

NEW STYLE

Our versatile merino wool Tech Lite II Short Sleeve Tee provides comfort, breathability and odor-resistance for just about any adventure you can think of.

- 100% Merino - Soft merino fibers that regulate body temperature in all weather conditions and resists odors
- Offset shoulder seams to prevent friction

**Fabric Main:** 150gm<sup>2</sup> Jersey, 100% Merino Wool

**Fiber micron:** Merino Wool 18.9 micron

**Fit:** Regular

**Sizes:** S-XXL

**Ships:** 31-January-2022



IB0A56LU401  
MIDNIGHT NAVY  
NEW



IB0A56LU069  
LODEN  
NEW



### Tech Lite II SS Tee Waschbar Wandering

NEW STYLE

Our versatile merino wool Tech Lite II Short Sleeve Tee provides comfort, breathability and odor-resistance for just about any adventure you can think of.

- 100% Merino - Soft merino fibers that regulate body temperature in all weather conditions and resists odors
- Offset shoulder seams to prevent friction

**Fabric Main:** 150gm<sup>2</sup> Jersey, 100% Merino Wool

**Fiber micron:** Merino Wool 18.9 micron

**Fit:** Regular

**Sizes:** S-XXL

**Ships:** 31-January-2022



IB0A56LV004  
GRITSTONE HTHR  
NEW



IB0A56LV351  
AZUL  
NEW





### Tech Lite II SS Polo

A classic merino wool jersey polo offering softness and comfort for everyday.

- 100% Merino - Soft merino fibers that regulate body temperature in all weather conditions and resists odors
- Rib collar
- Offset shoulder seams to prevent friction
- Side slits at hem for movement
- Natural Corozo Buttons

**Fabric Main:** 150gm<sup>2</sup> Jersey, 100% Merino Wool

**Fiber micron:** Merino Wool 18.9 micron

**Fit:** Regular

**Sizes:** S-XXL

**Ships:** 31-January-2022



IB0A59LC001  
BLACK



IB0A59LC004  
GRITSTONE HTHR



IB0A59LC069  
LODEN



IB0A59LC401  
MIDNIGHT NAVY  
NEW

### Drayden SS Polo

NEW STYLE

This classic jersey polo in our Cool-Lite™ blend of merino wool and TENCEL™ keeps you cool in comfort.

- Cool-Lite™ - A lightweight and breathable fabric blend that is designed to wick moisture away from the body
- Chest pocket
- Natural Corozo Buttons

**Fabric Main:** 150gm<sup>2</sup> Cool-Lite™ Jersey, 60% TENCEL™, 40% Merino Wool

**Fiber micron:** Merino Wool 18.9 micron

**Fit:** Regular

**Sizes:** S-XXL

**Ships:** 28-February-2022



IB0A56E1001  
BLACK  
NEW



IB0A56E1004  
GRITSTONE HTHR  
NEW



IB0A56E1347  
PRALINE  
NEW



### Steveston SS Shirt

NEW STYLE

A classic lightweight short sleeve woven shirt in our Cool-Lite™ blend of merino wool and TENCEL™. Can be worn buttoned up for a smart look or open and layered over a tee for a more casual look.

- Cool-Lite™ - A lightweight and breathable fabric blend that is designed to wick moisture away from the body
- Chest pocket
- Offset shoulder seams
- Natural Corozo Buttons

**Fabric Main:** 120gm<sup>2</sup> Woven Twill, 55% Merino Wool, 45% TENCEL™

**Fiber micron:** Merino Wool 18.9 micron

**Fit:** Regular

**Sizes:** S-XXL

**Ships:** 31-January-2022



IB0A56EG342  
GRAPE  
NEW



IB0A56EG069  
LODEN  
NEW



IB0A56EG401  
MIDNIGHT NAVY  
NEW



### Steveston LS Shirt

NEW STYLE

A classic lightweight long sleeve woven shirt in our Cool-Lite™ blend of merino wool and TENCEL™. Can be worn buttoned up for a smart look or open and layered over a tee for a more casual look.

- Cool-Lite™ - A lightweight and breathable fabric blend that is designed to wick moisture away from the body
- Chest pocket
- Adjustable cuffs
- Offset shoulder seams
- Natural Corozo Buttons

**Fabric Main:** 120gm<sup>2</sup> Woven Twill, 55% Merino Wool, 45% TENCEL™

**Fiber micron:** Merino Wool 18.9 micron

**Fit:** Regular

**Sizes:** S-XXL

**Ships:** 31-January-2022



IB0A56EF069  
LODEN  
NEW



IB0A56EF401  
MIDNIGHT NAVY  
NEW



## Pankow SS Shirt

NEW STYLE

A relaxed fit men's short sleeve shirt offers style and comfort with the natural benefits of merino.

- 100% Merino - Soft merino fibers that regulate body temperature in all weather conditions and resists odors
- Natural Corozo Buttons
- Back pleats for movement and comfort
- Revere collar
- Double chest pockets
- Side vents for movement

**Fabric Main:** 190gm<sup>2</sup> Pique Jersey, 100% Merino Wool

**Fiber micron:** Merino Wool 18.9 micron

**Fit:** Relaxed

**Sizes:** S-XXL

**Ships:** 11-April-2022



IB0A56D9001  
BLACK  
NEW



IB0A56D9069  
LODEN  
NEW



# Mid Layer.

Insulating natural layers wrap your body in warmth, using innovative designs and technologies to shield you from the cold.



### ZoneKnit™ Insulated Vest

NEW STYLE

Designed for skiing, hiking and adventure. The ZoneKnit™ Insulated Vest features an insulated front panel and incorporates ZoneKnit™ technology.

- 100% Merino - Soft merino fibers that regulate body temperature in all weather conditions and resists odors
- ZoneKnit™ - Body mapping technology designed to actively regulate body temperature and let skin breathe during high-intensity activity
- Quilted insulated front panel that traps heat to keep you warm
- Double layer self standing collar
- Reinforced shoulder panels for carrying backpacks
- No side seams to prevent friction
- 2-way zip
- Zippered hand pockets
- Internal dump pockets that can fit a pair of gloves

**Fabric Main:** 12gg Knit, 100% Merino Wool

**Fiber micron:** Merino Wool 18.9 micron

**Fit:** Slim

**Sizes:** S-XXL

**Ships:** 31-January-2022



IB0A56FB001  
BLACK  
NEW



IB0A56FB383  
GRAPE/LAVA  
NEW



### ZoneKnit™ Insulated LS Zip Hoodie

Designed for skiing, hiking and adventure. The ZoneKnit™ Insulated Hoodie features an insulated front panel and hood and incorporates ZoneKnit™ technology.

- 100% Merino - Soft merino fibers that regulate body temperature in all weather conditions and resists odors
- ZoneKnit™ - Body mapping technology designed to actively regulate body temperature and let skin breathe during high-intensity activity
- Quilted insulated front panel that traps heat to keep you warm
- Insulated hood
- Raglan sleeve construction for mobility
- No side seams to prevent friction
- 2-way zip
- Zippered hand pockets
- Internal dump pockets that fits a pair of gloves

**Fabric Main:** 12gg Knit, 100% Merino Wool

**Fiber micron:** Merino Wool 18.9 micron

**Fit:** Slim

**Sizes:** S-XXL

**Ships:** 31-January-2022



IB0A59HH001  
BLACK



### Quantum III LS Zip

NEW STYLE

A technical slim-fit midlayer that is ideal for mountain adventures like hiking and skiing, the Quantum Long Sleeve Zip helps regulate your body temperature.

- 100% Merino - Soft merino fibers that regulate body temperature in all weather conditions and resists odors
- Thumb loops to keep your sleeves in place and hands warm
- Offset shoulder seams to prevent friction
- 2-way zip
- Zipper chin guard to prevents friction
- Zippered hand and chest pockets
- Internal dump pockets that fit's a pair of gloves
- Drop tail hem for added coverage
- Side seams from underarm to finish at hem towards the back for comfort

**Fabric Main:** 270gm<sup>2</sup> Unbrushed Baby Terry, 100% Merino Wool

**Fiber micron:** Merino Wool 20.9 micron

**Fit:** Slim

**Sizes:** S-XXL

**Ships:** 31-January-2022



IB0A56FP001  
BLACK  
NEW



IB0A56FP362  
AZUL/HAZE  
NEW



### Quantum III LS Zip Hoodie

A slim-fit midlayer that is ideal for technical mountain adventures like hiking and skiing, the Quantum Long Sleeve Zip Hoodie helps regulate your body temperature.

- 100% Merino - Soft merino fibers that regulate body temperature in all weather conditions and resists odors
- Fitted hood
- Thumb loops to keep your sleeves in place and hands warm
- Offset shoulder seams to prevent friction
- 2-way zip
- Zipper chin guard to prevents friction
- Zippered hand and chest pockets
- Internal dump pockets that fit's a pair of gloves
- Side seams from underarm to finish at hem towards the back for comfort
- Drop tail hem for added coverage

**Fabric Main:** 270gm<sup>2</sup> Unbrushed Baby Terry, 100% Merino Wool

**Fiber micron:** Merino Wool 20.9 micron

**Fit:** Slim

**Sizes:** S-XXL

**Ships:** 31-January-2022



IB0A59JX001  
BLACK



IB0A59JX362  
AZUL/HAZE  
NEW



IB0A59JX384  
LAVA/GRAPE  
NEW



IB0A59JX056  
METRO HTHR/BLACK  
NEW

### Descender LS Zip

A technical men's merino wool fleece mid layer, the Descender Long Sleeve Zip is designed for cold, aerobic days outside.

- RealFleece™ - An authentic brushed merino wool that is naturally warm and soft to the touch
- Thumb loops keep your sleeves in place and hands warm
- Offset shoulder seams to prevent friction
- Flatlock seams to prevent friction
- Zipper chin guard and interior storm flap to prevent friction
- Zippered hand and chest pockets
- Merino pocket lining for added comfort
- Drop tail hem for added coverage

**Fabric Main:** 240gm<sup>2</sup> RealFleece™ Textured Brushed Terry, 84% Merino Wool, 9% Nylon, 7% LYCRA®

**Fabric insert side panels:** 200gm<sup>2</sup> Unbrushed Baby Terry Corespun, 88% Merino Wool, 9% Nylon, 3% LYCRA®

**Fiber micron:** Merino Wool 18.9 micron

**Fit:** Slim

**Sizes:** S-XXL

**Ships:** 31-January-2022



IB104853A01  
JET HTHR/BLACK



IB104853384  
LAVA/GRAPE  
NEW



100% PURE MERINO



### Original LS Half Zip

A versatile zip-neck merino wool pullover, the Original Long Sleeve Half Zip brings merino performance for hiking, skiing, travel, and other adventures.

- 100% Merino - Soft merino fibers that regulates body temperature in all weather conditions and resists odors
- Thumb loops keep your sleeves in place and hands warm
- Fully fashioned rib collar

**Fabric Main:** 320gm<sup>2</sup> Sport Jersey, 100% Merino Wool

**Fiber micron:** Merino Wool 20.9 micron

**Fit:** Regular

**Sizes:** S-XXL

**Ships:** 31-January-2022



IB100871001  
BLACK

### Cool-Lite™ LS Hoodie

NEW STYLE

A lightweight breathable performance hoodie designed for aerobic days outside when you need an extra layer to add a bit of protection.

- Cool-Lite™ - A lightweight and breathable fabric blend that is designed to wick moisture away from the body
- Fitted hood
- Raglan sleeve construction at front for mobility
- Set in sleeves at back with offset shoulder seams to prevent friction
- Thumb loops to keep your sleeves in place and hands warm
- Internal small secure pocket in wearer's right hand side seam
- Drop tail hem for added coverage

**Fabric Main:** 150gm<sup>2</sup> Cool-Lite™ Jersey, 60% TENCEL™, 40% Merino Wool

**Fiber micron:** Merino Wool 18.9 micron

**Fit:** Regular

**Sizes:** S-XXL

**Ships:** 31-January-2022



IB0A56EU001  
BLACK  
NEW



IB0A56EU351  
AZUL  
NEW



### Wilcox LS Sweater

NEW STYLE

A classic everyday fine gauge merino wool sweater for those days you need an extra lightweight layer.

- 100% Merino - Soft merino fibers that regulate body temperature in all weather conditions and resists odors
- Rib neck, sleeve cuffs and bottom hem
- Fully Fashioned

**Fabric Main:** 14gg Knit, 100% Merino Wool

**Fiber micron:** Merino Wool 18.9 micron

**Fit:** Regular

**Sizes:** S-XXL

**Ships:** 31-January-2022



IB0A56C9342  
GRAPE  
NEW



IB0A56C9401  
MIDNIGHT NAVY  
NEW



### Wilcox LS V Sweater

NEW STYLE

A classic everyday fine gauge merino wool sweater for those days you need an extra lightweight layer.

- 100% Merino - Soft merino fibers that regulate body temperature in all weather conditions and resists odors
- Rib neck, sleeve cuffs and bottom hem
- Fully Fashioned

**Fabric Main:** 14gg Knit, 100% Merino Wool

**Fiber micron:** Merino Wool 18.9 micron

**Fit:** Regular

**Sizes:** S-XXL

**Ships:** 31-January-2022



IB0A56CA069  
LODEN  
NEW



IB0A56CA347  
PRALINE  
NEW



### Shifter LS Sweatshirt

NEW STYLE

A classic, everyday, regular fit sweatshirt that is ideal for layering, made in comfortable and soft merino wool terry.

- 100% Merino (main fabric) - Soft merino fibers that regulate body temperature in all weather conditions and resists odors
- Rib neck, sleeve cuffs and bottom hem

**Fabric Main:** 270gm<sup>2</sup> Unbrushed Baby Terry, 100% Merino Wool

**Fabric Neck, Cuffs, Hem:** 425gm<sup>2</sup> 2x2 Rib, 98% Merino Wool, 2% LYCRA®

**Fiber micron:** Merino Wool 20.9 micron

**Fit:** Regular

**Sizes:** S-XXL

**Ships:** 31-January-2022



IB0A56JB001  
BLACK  
NEW



IB0A56JB069  
LODEN  
NEW



# Bottoms.

Versatile pants, shorts and tights stretch dynamically with you, breathing next to your skin and wicking away moisture for comfort on the move.

### Impulse Running Shorts

The ideal men's shorts for training or race day, the Impulse Running Shorts provide optimal comfort in all conditions, featuring our soft, durable merino cool-lite™ fabric.

- Cool-Lite™ - A lightweight and breathable fabric blend that is designed to wick moisture away from the body
- Waistband with internal drawcord for adjustability
- Gusset for mobility and comfort
- Zippered back stash pocket
- Power mesh back hip pockets
- PFC Free durable water repellent finish - for light rain protection

**Fabric Main:** 55gm<sup>2</sup> woven with PFC-free DWR finish, 46% Recycled Nylon, 44% Nylon, 10% LYCRA®

**Fabric Mesh:** 145gm<sup>2</sup> eyelet corespun, 51% Merino, 35% TENCEL®, 14% Nylon

**Fit:** Regular

**Sizes:** S-XXL

**Ships:** 28-February-2021



IB104586010  
BLACK



100% PURE MERINO



IB0A56C4001  
BLACK  
NEW



IB0A56C4004  
GRITSTONE HTHR  
NEW

### Shifter Shorts

NEW STYLE

Comfortable regular-fit merino men's shorts, the Shifter Shorts are a classic sweat short with the soft touch of merino wool terry fabric.

- 100% Merino - Soft merino fibers that regulate body temperature in all weather conditions and resists odors
- Elastic waist with internal drawcord
- Front slash pockets

**Fabric Main:** 270gm<sup>2</sup> Unbrushed Baby Terry, 100% Merino Wool

**Fiber micron:** Merino Wool 20.9 micron

**Fit:** Regular

**Sizes:** S-XXL

**Ships:** 11-April-2022

### Shifter Pants

Comfortable regular-fit merino men's pants, the Shifter Pants combine classic jogger-style sweatpants with the soft touch of merino wool terry fabric.

- Merino Corespun - durable merino blend regulates body temperature in all weather conditions
- Elastic waist with internal drawcord
- Tapered leg
- Merino pocket lining for added comfort

**Fabric Main:** 200gm<sup>2</sup> Unbrushed Baby Terry, 88% Merino Wool, 9% Nylon, 3% LYCRA®

**Fabric cuffs:** 98% Merino Wool, 2% LYCRA®

**Fiber micron:** Merino Wool 18.9 micron

**Fit:** Regular

**Sizes:** S-XXL

**Ships:** 31-January-2022



IB104345001  
BLACK



IB104345004  
GRITSTONE HTHR



### Berlin Shorts

A classic and versatile chino short made from a unique blend of merino wool and organic cotton.



- Merino-Cotton – durable merino blend that is breathable and comfortable
- Belt loops
- Front fly with zip closure and internal French bearer
- Hand pockets
- Back welt pockets with button on right side
- Natural Corozo buttons

**Fabric Main:** 255gm<sup>2</sup> Woven Twill, 70% Merino Wool, 30% Organic Cotton

**Fiber micron:** Merino Wool 20.9 micron

**Fit:** Regular

**Sizes:** 28,30,32,34,36,38,40

**Ships:** 11–April–2022



IB0A56KE001  
BLACK  
NEW



IB0A56KE073  
GRITSTONE HTHR  
NEW

### Berlin Pants

NEW STYLE

A classic and versatile chino pant made from a unique blend of merino wool and organic cotton.



- Merino-Cotton – durable merino blend that is breathable and comfortable
- Belt loops
- Front fly with zip closure and internal French bearer
- Hand pockets
- Back welt pockets with button on right side
- Natural Corozo buttons

**Fabric Main:** 255gm<sup>2</sup> Woven Twill, 70% Merino Wool, 30% Organic Cotton

**Fiber micron:** Merino Wool 20.9 micron

**Fit:** Regular

**Sizes:** 28,30,32,34,36,38,40

**Ships:** 11–April–2022



IB0A56KD001  
BLACK  
NEW



IB0A56KD073  
SAND  
NEW



# Accessories.

Designed to provide ultimate natural style, versatility and comfort.



### Pocket Hat

Simple, warm and fully reversible, the slim-fit Pocket Hat is a comfy 100% merino wool hat with two colors for versatile winter warmth.

- 100% Merino - Soft merino fibers that regulates body temperature in all weather conditions and resists odors
- Reversible - can be worn two ways

**Fabric Main:** 200gm<sup>2</sup> Jersey, 100% Merino Wool

**Fiber micron:** Merino Wool 18.9 micron

**Fit:** Slim

**Sizes:** One size

**Ships:** 31-January-2022



IBIBM200A04  
BLACK/GRITSTONE  
HTHR



IBIBM200471  
GRITSTONE HTHR/  
HAZE  
NEW



### Cool-Lite™ Flexi Headband

UPDATED STYLE

Our soft and stretchy merino wool headband for year-round performance.

- Cool-Lite™ - A lightweight and breathable fabric blend that is designed to wick moisture away from the body

**Fabric Main:** 150gm<sup>2</sup> Cool-Lite™ Jersey, 60% TENCEL™, 40% Merino Wool

**Fiber micron:** Merino Wool 18.9 micron

**Fit:** Slim

**Sizes:** One size

**Ships:** 31-January-2022



IB0A56FN001  
BLACK  
NEW



IB0A56FN342  
GRAPE  
NEW



IB0A56FN344  
HAZE  
NEW



### Cool-Lite™ Flexi Beanie

UPDATED STYLE

Our stretchy, ultralight merino wool beanie for year-round performance.

- Cool-Lite™ - A lightweight and breathable fabric blend that is designed to wick moisture away from the body

**Fabric Main:** 150gm<sup>2</sup> Cool-Lite™ Jersey, 60% TENCEL™, 40% Merino Wool

**Fiber micron:** Merino Wool 18.9 micron

**Fit:** Slim

**Sizes:** One size

**Ships:** 31-January-2022



IB0A56FM001  
BLACK  
NEW



IB0A56FM342  
GRAPE  
NEW



IB0A56FM344  
HAZE  
NEW

### icebreaker 6 Panel Hat

NEW STYLE

A classic cap in our all natural blend of merino wool and organic cotton.

- Metal strap adjuster
- Eyelets for breathability

**Fabric Main:** 255gm<sup>2</sup> Woven Twill, 70% Merino Wool, 30% Organic Cotton

**Internal Band:** 150gm<sup>2</sup> Jersey, 100% Merino Wool

**Fiber micron:** Merino Wool 20.9 micron

**Sizes:** One size

**Ships:** 11–April–2022



IB0A59HA001  
BLACK  
NEW



IB0A59HA101  
SNOW  
NEW

### icebreaker Patch Hat

A sleek and comfortable merino wool ballcap, the icebreaker Patch Hat is an everyday hat with the breathable and odor-resistant performance of merino.

- Medium crown
- Adjustable snap back closure

**Fabric Main:** 310gm<sup>2</sup> Canvas Woven, 70% Merino Wool, 30% Polyester

**Lining:** 130gm<sup>2</sup> Cool-Lite™ Jersey Corespun, 52% Merino Wool, 35% TENCEL™, 13% Nylon

**Fiber micron:** Merino Wool 20.9 micron

**Fit:** Regular

**Sizes:** One size

**Ships:** 31–January–2022



IB105255002  
JET HTHR



IB105255347  
PRALINE  
NEW

### Cool-Lite™ Flexi Chute

UPDATED STYLE

Versatile merino wool chute featuring our Cool-Lite™ fabric, the Flexi Chute is a face mask, beanie, neck-warmer, sunshade and headband all rolled into one.

- Cool-Lite™ - A lightweight and breathable fabric blend that is designed to wick moisture away from the body

**Fabric Main:** 150gm<sup>2</sup> Cool-Lite™ Jersey, 60% TENCEL™, 40% Merino Wool

**Fiber micron:** Merino Wool 18.9 micron

**Sizes:** One size

**Ships:** 31–January–2022



IB0A56FL001  
BLACK  
NEW



IB0A56FL342  
GRAPE  
NEW



IB0A56FL344  
HAZE  
NEW

## Sierra Gloves

Warm and functional, the Sierra Gloves are made with midweight merino-blend RealFleece™ fabric and include faux-suede palms and touchscreen-compatible fingertips.



- RealFleece™ - An authentic brushed merino wool that is naturally warm and soft to the touch
- Touchscreen technology in thumb and index fingertips
- Faux suede palm for enhanced grip
- Clips store gloves together

**Fabric Main:** 200gm<sup>2</sup> Brushed Terry, 88% Merino Wool, 9% Nylon, 3% LYCRA®

**Fiber micron:** Merino Wool 18.9 micron

**Fit:** Slim

**Sizes:** XS, S, M, L, XL

**Ships:** 31-January-2022



IB104829001  
BLACK

## 200 Oasis Glove Liners

Lightweight merino wool glove liners for trail running, hiking or layering in winter conditions.

- The Oasis Glove Liners feature LYCRA® for a stretchy, secure fit

**Fabric Main:** 200gm<sup>2</sup> Jersey, 96% Merino Wool, 4% LYCRA®

**Fiber micron:** Merino Wool 18.9 micron

**Fit:** Slim

**Sizes:** XS, S, M, L, XL

**Ships:** 31-January-2022



IB1B207001  
BLACK

## Quantum Gloves

The Quantum Gloves are technical, midweight and stretchy merino-blend wool gloves with touchscreen fingertips and silicone grip on the palms.



- Touchscreen technology in thumb and index fingertips
- Silicone palm for enhanced grip
- Clips store gloves together

**Fabric Main:** 260gm<sup>2</sup> Unbrushed Terry Corespun, 98% Merino Wool, 2% LYCRA®

**Fiber micron:** Merino Wool 20.9 micron

**Fit:** Regular

**Sizes:** XS, S, M, L, XL

**Ships:** 31-January-2022



IB104828001  
BLACK



# Socks.

Natural fibers breathe freely and hug your feet in softness, with a range of options from zoned cushioning to lightweight luxury and heavyweight warmth.

# Run+ construction features



- A Anatomical toe box for unique left and right fit
- B Sculptured cushion maximizes fit and comfort
- C Achilles support keeps your sock in place
- D Reinforced heel and toe for durability and strength
- E Instep support for stability
- F Seamless toe closure to reduce bulk and prevent blisters
- G Breathe zone for improved ventilation



## Run+ Ultralight Micro

Thin, ultralight running socks made with a technical merino wool blend and no-show height, the Run+ Light Micro is perfect for runs of any length.

- Anatomically sculptured, thin and ultra lightweight run sock

Content	W	M
Nylon	49%	51%
Merino Wool	48%	47%
LYCRA®	3%	2%

**Fiber micron:** Merino Wool  
19.5 micron

**Sock Height:** Micro

**Ships:** 31—January—2022

Women S, M, L

Men S, M, L, XL



IB104215A06  
BLACK/SNOW  
NEW



IB104215362  
AZUL/HAZE  
NEW



IB104212A06  
BLACK/SNOW  
NEW



IB104212341  
HAZE/AZUL  
NEW



IB104215340  
COSMIC/GRAPE  
NEW



IB104212470  
GRAPE/HAZE  
NEW

## Run+ Ultralight Mini

Thin, ultralight running socks made with a technical merino wool blend and low cut height, the Run+ Light Mini is perfect for runs of any length.

- Anatomically sculptured, thin and ultra lightweight run sock

Content	W	M
Merino Wool	49%	45%
Nylon	48%	53%
LYCRA®	3%	2%

**Fiber micron:** Merino Wool  
19.5 micron

**Sock Height:** Mini

**Ships:** 31—January—2022

Women S, M, L

Men S, M, L, XL



IB104216A06  
BLACK/SNOW  
NEW



IB104216362  
AZUL/HAZE  
NEW



IB104213A06  
BLACK/SNOW  
NEW



IB104213341  
HAZE/AZUL  
NEW



IB104216340  
COSMIC/GRAPE  
NEW



IB104213470  
GRAPE/HAZE  
NEW

# Multisport construction features



- A Achilles support keeps your sock in place
- B Instep support for stability
- C Seamless toe closure to reduce bulk and prevent blisters
- D Breathe zone for improved ventilation
- E Function junction to eliminate bulk

## Multisport Light Micro

Versatile and highly breathable merino wool socks designed for running, biking, hiking, and more, the Multisport Light Micro offers durable, moisture-wicking performance no matter your passion.

- Ultralight cushioned multi-purpose sport sock

Content	W	M
Merino Wool	59%	63%
Nylon	39%	35%
LYCRA®	2%	2%

**Fiber micron:** Merino Wool  
21.5 micron

**Sock Height:** Micro

**Ships:** 31—January—2022

Women S, M, L

Men S, M, L, XL



IB105128377  
BLACK/SNOW/  
METRO HTHR  
**NEW**



IB105128374  
GRAPE/HAZE/  
BLIZZARD HTHR  
**NEW**



IB105129377  
BLACK  
**NEW**



IB105129379  
LAVA/GRAPE/  
BLIZZARD HTHR  
**NEW**



IB105128373  
HAZE/AZUL/  
METRO HTHR  
**NEW**



IB105129376  
AZUL/HAZE/GRAPE  
**NEW**

## Multisport Light Mini

Versatile and highly breathable women's merino wool socks designed for running, biking, hiking, and more, the Multisport Light Mini offers durable, moisture-wicking performance no matter your passion.

- Ultralight cushioned multi-purpose sport sock

Content	W	M
Merino Wool	59%	63%
Nylon	39%	35%
LYCRA®	2%	2%

**Fiber micron:** Merino Wool  
21.5 micron

**Sock Height:** Mini

**Ships:** 31—January—2022

Women S, M, L

Men S, M, L, XL



IB105127377  
BLACK/SNOW/  
METRO HTHR  
**NEW**



IB105127374  
GRAPE/HAZE/  
BLIZZARD HTHR  
**NEW**



IB105132377  
BLACK/SNOW/  
METRO HTHR  
**NEW**



IB105132379  
LAVA/GRAPE/  
BLIZZARD HTHR  
**NEW**



IB105127373  
HAZE/AZUL/  
METRO HTHR  
**NEW**



IB105132376  
AZUL/HAZE/  
GRAPE  
**NEW**



# Hike+ construction features



- A Anatomical toe box for unique left and right fit
- B Sculptured cushion maximizes fit and comfort
- C Achilles support keeps your sock in place
- D Reinforced heel and toe for durability and strength
- E Ankle support enhances fit
- F Instep support for stability
- G Seamless toe closure to reduce bulk and prevent blisters
- H Breathe zone for improved ventilation
- I Function junction to eliminate bulk
- J Comfort cuff wide welt for comfort



## Hike+ Light Mini

Lightweight high-performance women's merino wool hiking socks with added stability and support, the Hike+ Light Mini features a soft and durable merino blend.

- Anatomically sculptured, half cushioned hike sock

Content	W	M
Merino Wool	61%	63%
Nylon	37%	35%
LYCRA®	2%	2%

**Fiber micron:** Merino Wool  
22.0 micron

**Sock Height:** Mini

**Ships:** 31-January-2022

Women S, M, L



IB105098017  
BLIZZARD HTHR

IB105098371  
LODEN/BLIZZARD  
HTHR/SNOW  
**NEW**



IB105098373  
HAZE/AZUL/  
METRO HTHR  
**NEW**



IB105098374  
GRAPE/HAZE/  
BLIZZARD HTHR  
**NEW**

Men S, M, L, XL



IB105102002  
JET HTHR

IB105102387  
BLIZZARD HTHR/  
BLACK/MONSOON  
**NEW**



IB105102374  
GRAPE/HAZE/  
BLIZZARD HTHR  
**NEW**



IB105102376  
AZUL/HAZE/GRAPE  
**NEW**

## Hike+ Heavy Crew

Durable, fully cushioned crew length merino wool socks that are stretchy, breathable and odor-resistant, the Hike+ Heavy Crew socks feature an anatomical sculpted design for cold day hikes and backpacking trips.

- Anatomically sculptured, fully and densely cushioned hike sock

Content	M
Merino Wool	66%
Nylon	32%
LYCRA®	2%

**Fiber micron:** Merino Wool  
22.0 micron

**Sock Height:** Crew

**Ships:** 31-January-2022

Men S, M, L, XL



IB105104286  
BLIZZARD HTHR/  
SNOW/MONSOON

IB105104376  
AZUL/HAZE/GRAPE  
**NEW**

**Hike+ Medium Crew**

Durable, medium cushioned crew-length merino wool socks that are stretchy, breathable and odor-resistant, the Hike+ Medium Crew socks feature an anatomical sculpted design for day hikes and backpacking trips.

- Anatomically sculptured, fully cushioned hike sock

Content	W	M
Merino Wool	66%	65%
Nylon	32%	33%
LYCRA®	2%	2%

**Fiber micron:** Merino Wool  
22.0 micron

**Sock Height:** Crew

**Ships:** 31–January–2022

Women S, M, L



IB105097017  
BLIZZARD HTHR



IB105097371  
LODEN/  
BLIZZARD HTHR/SNOW  
**NEW**



IB105097372  
COSMIC/GRAPE/  
BLIZZARD HTHR  
**NEW**

Men S, M, L, XL



IB105101017  
BLIZZARD HTHR



IB105101371  
LODEN/  
BLIZZARD HTHR/SNOW  
**NEW**



IB105101374  
GRAPE/HAZE/  
BLIZZARD HTHR  
**NEW**

**Hike Liner Crew**

Ultralight and thin yet durable, the Hike Liner Crew socks are breathable, quick-drying and comfortable, either paired with a heavier sock or worn alone in hot conditions.

- Thin and light, yet highly durable, hike liner

Content	W	M
Merino Wool	55%	55%
Nylon	43%	43%
LYCRA®	2%	2%

**Fiber micron:** Merino Wool  
19.5 micron

**Sock Height:** Crew

**Ships:** 31–January–2022

Women S, M, L



IB103954001  
BLACK

Men S, M, L, XL



IB103955001  
BLACK

**Hike+ Light Crew**

Durable, fully cushioned crewlength merino wool socks that are stretchy, breathable and odor-resistant, the Hike+ Light Crew socks feature an anatomical sculpted design for day hikes and backpacking trips.

- Anatomically sculptured, half cushioned hike sock

Content	W	M
Merino Wool	61%	61%
Nylon	37%	37%
LYCRA®	2%	2%

**Fiber micron:** Merino Wool  
22.0 micron

**Sock Height:** Crew

**Ships:** 31–January–2022

Women S, M, L



IB105099017  
BLIZZARD HTHR



IB105099371  
LODEN/  
BLIZZARD HTHR/SNOW  
**NEW**



IB105099373  
HAZE/AZUL/  
METRO HTHR  
**NEW**



IB105099374  
GRAPE/HAZE/  
BLIZZARD HTHR  
**NEW**

Men S, M, L, XL



IB105103017  
BLIZZARD HTHR



IB105103371  
LODEN/  
BLIZZARD HTHR/SNOW  
**NEW**



IB105103376  
AZUL/HAZE/GRAPE  
**NEW**



IB105103374  
GRAPE/HAZE/  
BLIZZARD HTHR  
**NEW**

# Lifestyle construction features



- A Achilles support keeps your sock in place
- B Reinforced heel and toe for durability and strength
- C Instep support for stability
- D Seamless toe closure to reduce bulk and prevent blisters

NEW STYLE

## Lifestyle Fine Gauge No Show

Lightweight casual socks perfect for everyday use, the Lifestyle Fine Gauge No Show combines premium merino wool comfort with a durable construction.

- Durable, ultra lightweight lifestyle sock

Content	W	M
Merino Wool	53%	55%
Nylon	45%	43%
LYCRA®	2%	2%

**Fiber micron:** Merino Wool  
19.5 micron

**Sock Height:** No show

**Ships:** 31-January-2022

Women S, M, L



IB0A56CEA06  
BLACK/SNOW  
NEW

Men S, M, L, XL



IB0A56D5A06  
BLACK/SNOW  
NEW

## Lifestyle Light Crew

Lightweight, soft, and breathable for everyday comfort, the Lifestyle Light Crew socks are made with a stretchy and luxurious merino wool blend, with reinforced heels and toes.

- Lightweight half cushioned lifestyle sock

Content	W	M
Merino Wool	61%	61%
Nylon	37%	37%
LYCRA®	2%	2%

**Fiber micron:** Merino Wool  
21.5 micron

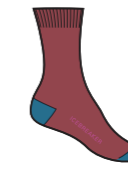
**Sock Height:** Crew

**Ships:** 31-January-2022

Women S, M, L



IBIBN313001  
BLACK



IBIBN313368  
GRAPE/AZUL/COSMIC  
NEW

Men S, M, L, XL



IBIBN327001  
BLACK



IBIBN327368  
GRAPE/AZUL/COSMIC  
NEW



IBIBN313367  
LODEN/MIDNIGHT  
NAVY/HAZE  
NEW



IBIBN327367  
LODEN/MIDNIGHT  
NAVY/HAZE  
NEW

### Lifestyle Fine Gauge Crew

Lightweight casual socks perfect for everyday use, the Lifestyle Fine Gauge Crew combines premium merino wool comfort with a durable construction.

- Durable, ultra lightweight lifestyle sock

Content	W	M
Merino Wool	66%	63%
Nylon	32%	35%
LYCRA®	2%	2%

**Fiber micron:** Merino Wool  
19.5 micron

**Sock Height:** Crew

**Ships:** 31—January—2022

Women S/M, L/XL



IB105253001  
BLACK



IB105253299  
GRITSTONE HTHR/  
SNOW  
NEW



IB105253137  
ESPRESSO/BLACK  
NEW

Men S/M, L/XL



IB105116001  
BLACK



IB105116299  
GRITSTONE HTHR/  
SNOW  
NEW



IB105116137  
ESPRESSO/BLACK  
NEW

NEW STYLE

### Lifestyle Fine Gauge Crew Stripe

Lightweight casual socks perfect for everyday use, the Lifestyle Fine Gauge Crew combines premium merino wool comfort with a durable construction.

- Durable, ultra lightweight lifestyle sock

Content	M
Merino Wool	69%
Nylon	29%
LYCRA®	2%

**Fiber micron:** Merino Wool  
19.5 micron

**Sock Height:** Crew

**Ships:** 31—January—2022

Men S/M, L/XL



IB0A56KF699  
MIDNIGHT NAVY/  
LODEN/GRAPE  
NEW



IB0A56KF709  
PRALINE/SNOW/  
GRITSTONE HTHR  
NEW

### Lifestyle Fine Gauge Crew Dashes

Lightweight casual socks perfect for everyday use, the Lifestyle Fine Gauge Crew combines premium merino wool comfort with a durable construction.

- Durable, ultra lightweight lifestyle sock

Content	W
Merino Wool	57%
Nylon	41%
LYCRA®	2%

**Fiber micron:** Merino Wool  
19.5 micron

**Sock Height:** Crew

**Ships:** 31—January—2022

Women S/M, L/XL



IB105304710  
GRITSTONE HTHR/  
HAZE/LODEN  
NEW



IB105304365  
MIDNIGHT NAVY/  
GRAPE/COSMIC  
NEW



# Kids.

Lightweight, soft and breathable merino base layers for year-round layering performance.



200 Oasis LS Crewe

- Flatlock seams prevent chafing
- Raglan sleeve construction for mobility
- Back length: 53cm/20¾", size 10
- Icebreaker tonal embroidered logo

**Fabric Main:** 200gm<sup>2</sup> jersey, 100% Merino

**Fit:** Slim

**Sizes:** 2-14

**Ships:** 31-January-2022

¼ Ages 2-4    ½ Ages 5-14



IB104501001  
BLACK



IB104501013  
GRITSTONE HTHR



200 Oasis Leggings

- Icebreaker branded brushed elastic waistband
- Flatlock seams prevent chafing
- Gusset for comfort and mobility
- Inseam: 61cm/23¾", size 10

**Fabric Main:** 200gm<sup>2</sup> jersey, 100% Merino

**Fit:** Slim

**Sizes:** 2-14

**Ships:** 31-January-2022

¼ Ages 2-4    ½ Ages 5-14



IB104503001  
BLACK



IB104503013  
GRITSTONE HTHR

# Hike construction features

- A Achilles support keeps your sock in place
- B Reinforced heel and toe for durability and strength
- C Instep support for stability
- D Seamless toe closure to reduce bulk and prevent blisters
- E Breathe zone for improved ventilation



Hike Light Crew

Versatile, outdoor kids sock with underfoot cushioning.

**Content**

Merino Wool	50%
Nylon	47%
LYCRA®	3%

**Sock Height:** Crew

**Ships:** 31-January-2022



IBIBND06006  
BLIZZARD HTHR/ISLE



IBIBND06403  
KINGFISHER/DEW



Reference.

SIZING / Measurements refer to body size, not garment dimensions.

In instances when your body measurements are midway between two sizes, go to the smaller size for a tighter fit or the larger size for a looser fit.

UPPER BODY MEASUREMENTS

WOMAN (INCHES)	WXS	WS	WM	WL	WXL
BUST	32¼	34½	37	39½	42
HEIGHT	5' 5¼	5' 6	5' 6½	5' 7	5' 7½

WOMAN (CM)	WXS	WS	WM	WL	WXL
BUST	82.0	88.0	94.0	100.0	107.0
HEIGHT	167.0	168.0	169.0	170.0	171.0

HOW TO MEASURE:

BUST	Place tape measure across your back, underneath your arms and then across the widest point on the bust. Don't 'squash' yourself.
HEIGHT	This is your true height, without the assistance of shoes.

In instances when your body measurements for bust and height are in two different suggested sizes, we recommend going with the size from your bust measurement.

LOWER BODY MEASUREMENTS

WOMAN (INCHES)	WXS	WS	WM	WL	WXL
WAIST	25¼	27½	30	32¼	35
HIP	35½	37¼	40	42	44½

WOMAN (CM)	WXS	WS	WM	WL	WXL
WAIST	64.0	70.0	76.0	82.0	89.0
HIP	90.0	96.0	102.0	107.0	113.0

WOMAN (INCHES)	WXS	WS	WM	WL	WXL			
WOVEN BOTTOMS SIZES	26	27	28	29	30	31	32	33

HOW TO MEASURE:

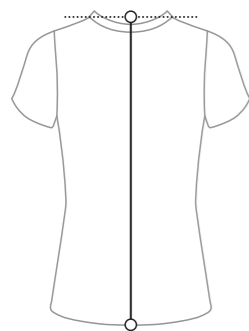
WAIST	Measure the smallest part of the torso.
HIP	Place the measuring tape around the body at the fullest part of the hip, feet together.

In instances when your body measurements for waist and hip are in different suggested sizes, we recommend going with the size from your hip measurement.

BACK LENGTH

FIT ON BODY

BL is measured from the high point of the shoulder



SIZING / Measurements refer to body size, not garment dimensions.

In instances when your body measurements are midway between two sizes, go to the smaller size for a tighter fit or the larger size for a looser fit.

UPPER BODY MEASUREMENTS

MAN (INCHES)	S	M	L	XL	XXL
CHEST	35¼	38¼	42	45	48¼
HEIGHT	5' 10	5' 10¼	5' 11½	6' 0¼	6' 1

MAN (CM)	S	M	L	XL	XXL
CHEST	90.5	98.5	106.5	114.5	122.5
HEIGHT	177.5	179.5	181.5	183.5	185.5

HOW TO MEASURE:

CHEST	Place tape measure across your back, underneath your arms and then across the fullest part of the chest.
HEIGHT	This is your true height, without the assistance of shoes.

In instances when your body measurements for chest and height are in two different suggested sizes, we recommend going with the size from your chest measurement.

LOWER BODY MEASUREMENTS

MAN (INCHES)	S	M	L	XL	XXL
WAIST	30½	33¼	36	38¼	41½
HIP	37	39½	42	44½	47

MAN (CM)	S	M	L	XL	XXL
WAIST	77.5	84.5	91.5	98.5	105.5
HIP	93.5	100.0	106.5	113.0	119.5

MAN (INCHES)	S	M	L	XL			
WOVEN BOTTOMS SIZES	28	30	32	34	36	38	40

HOW TO MEASURE:

WAIST	Measure at your navel.
HIP	Place the measuring tape around the body at the fullest part of the hip, feet together.

In instances when your body measurements for waist and hip are in different suggested sizes, we recommend going with the size from your hip measurement.

BACK LENGTH

FIT ON BODY

BL is measured from the high point of the shoulder





SIZING / Measurements refer to body size, not garment dimensions.

In instances when your body measurements are midway between two sizes, go to the smaller size for a tighter fit or the larger size for a looser fit.

BODY MEASUREMENTS

KIDS (INCHES)	2	3	4	5	6	8	10	12	14
SIZE (AGE)	2	3	4	5	6	8	10	12	14
HEIGHT	36 1/4	38 5/8	41	43 1/4	45 5/8	50 3/8	55 1/8	59 7/8	64 5/8
WEIGHT (LB)	29 - 33	33 - 37	37 - 42	42 - 46	46 - 53	53 - 64	64 - 82	82 - 101	101 - 121
CHEST	20 1/2	21 1/4	22	22 7/8	23 5/8	26	28 3/8	30 3/4	33 1/8
WAIST	20 1/8	20 1/2	20 7/8	21 1/4	21 5/8	23 1/4	24 3/4	26 3/8	28
HIP	21 1/4	22 1/4	23 1/4	24 1/4	25 1/4	27 1/2	29 7/8	32 1/4	34 5/8

KIDS (CM)	2	3	4	5	6	8	10	12	14
SIZE (AGE)	2	3	4	5	6	8	10	12	14
HEIGHT	92	98	104	110	116	128	140	152	164
WEIGHT (KG)	13 - 15	15 - 17	17 - 19	19 - 21	21 - 24	24 - 29	29 - 37	37 - 46	46 - 55
CHEST	52	54	56	58	60	66	72	78	84
WAIST	51	52	53	54	55	59	63	67	71
HIP	54	56.5	59	61.5	64	70	76	82	88

HOW TO MEASURE:

CHEST	Place tape measure across your back, underneath your arms and then across the fullest part of the chest.
HEIGHT	This is your true height, without the assistance of shoes.

In instances when your body measurements for chest and height are in two different suggested sizes, we recommend going with the size from your chest measurement.

SOCKS & COMPRESSION SIZING

If you are between sizing, we recommend you size down.

WOMAN	S	M	L
US	5.5-7	7.5-9	9.5-11
UK	3-4.5	5-6.5	7-8.5
EU	35-37	38-40	41-43

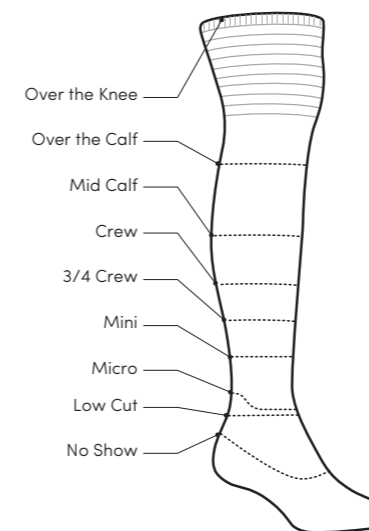
WOMAN	S/M	L/XL
US	5-9	9.5-11
UK	3-6.5	7-8.5
EU	35-39	40-43

MAN	S	M	L	XL
US	7-8.5	9-10.5	11-12.5	13-14.5
UK	6-7.5	8-9.5	10-11.5	12-13.5
EU	39-41.5	42-44	44.5-46.5	47-49

MAN	S/M	L/XL
US	7-10.5	11-14.5
UK	6-9.5	10-13.5
EU	39-44	45-49

KIDS	S	M	L	XL	XXL
US	8-9.5	10-11.5	12-1.5	2-4	4.5-6.5
UK	6.5-8	8.5-10.5	11-13.5	1-3	3-5
EU	24-26	27-29	30-32	33-36	35.5-37.5

SOCK HEIGHT GUIDE



EMEA SS22



**icebreaker**  
Move to natural